

# Anti-PYRIMIDINE B antibody

Catalog: PHY2811A

## Product Information

<b>Description:</b>	Rabbit polyclonal antibody
<b>Background:</b>	PYRB is an aspartate carbamoyltransferase catalyzing the condensation of carbamoyl phosphate and aspartate to form carbamoyl aspartate and inorganic phosphate, the committed step in the de novo pyrimidine nucleotide biosynthesis pathway.
<b>Synonyms:</b>	PYRB, ACT, ASPARTATE TRANSCARBAMOYLASE, PYRIMIDINE B
<b>Immunogen:</b>	KLH-conjugated synthetic peptide (18 aa from C terminal section) derived from <i>Arabidopsis thaliana</i> PYRB (AT3G20330).
<b>Form:</b>	Lyophilized
<b>Quantity:</b>	150 µg
<b>Purification:</b>	Immunogen affinity purified
<b>Reconstitution:</b>	Reconstitution with 150 µl of sterile 1XPBS (PH=7.4) containing 30% glycerol. "Note: please spin tube briefly prior to opening it to avoid any losses that might occur from lyophilized material adhering to the cap or sides of the tube".
<b>Stability &amp; Storage:</b>	Use a manual defrost freezer and avoid repeated freeze-thaw cycles. 12 months from date of receipt, -20 to -70°C as supplied. 6 months, -20 to -70°C under sterile conditions after reconstitution. 1 month, 2 to 8°C under sterile conditions after reconstitution.
<b>Shipping:</b>	The product is shipped at 4°C. Upon receipt, store it immediately at the temperature recommended above.

## Application Information

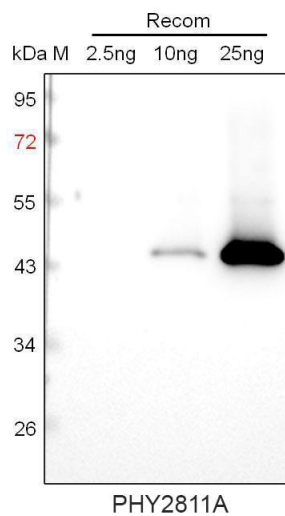
<b>Recommended Dilution:</b>	Western Blot (1:1000-1:2000) Note: Optimal dilutions/concentrations should be determined by the end user.
<b>Expected / apparent MW:</b>	43/36 kDa
<b>Predicted Reactivity:</b>	Among species analyzed, the sequence of the synthetic peptide used for immunization is 100% homologues with the sequence in <i>Zea mays</i> , <i>Oryza sativa</i> , <i>Hordeum vulgare</i> , <i>Glycine max</i> , <i>Triticum aestivum</i> ,

Research Use Only

*Nicotiana tabacum*, *Solanum lycopersicum*, *Brassica napus*, *Brassica rapa*, *Spinacia oleracea*, *Cucumis sativus*, *Medicago truncatula*, *Solanum tuberosum*, *Setaria viridis*, *Gossypium raimondii*, *Populus trichocarpa*, *Vitis vinifera*, *Sorghum bicolor*, *Panicum virgatum*, *Physcomitrella patens*.

For more species homologues information, please contact tech support at [tech@phytoab.com](mailto:tech@phytoab.com).

### Application Example



Recom: 2.5 ng, 10 ng and 25 ng recombinant protein containing the peptide for immunization and having a molecular mass of 45 kDa.

**Electrophoresis:** 12% SDS-PAGE

**Transfer:** blotting to NC (nitrocellulose) membrane for 1 h.

**Blocking:** 5% skim milk at RT or 4°C for 1 h.

**Primary antibody:** 1:1000 dilution overnight at 4°C.

**Secondary antibody:** 1:10000 dilution using Goat Anti-Rabbit IgG H&L (HRP) (Cat# PHY6000).

**Detection:** using chemiluminescence substrate and image were captured with CCD camera.