

# Anti-EPIDERMAL PATTERNING FACTOR 2 antibody

Catalog: PHY3064A

## Product Information

<b>Description:</b>	Rabbit polyclonal antibody
<b>Background:</b>	EPF2 is expressed in proliferating cells of the stomatal lineage and in guard mother cells, the progenitors of stomata. It controls asymmetric cell divisions during stomatal development. As EPF1, EPF2 is also involved in stomatal development. EPF2 binds to the ER receptor triggering MAPK activation that in turn inhibits stomatal development and competes with STOMAGEN for binding to receptor protein kinases ER, and TMM.
<b>Synonyms:</b>	EPF2, EPIDERMAL PATTERNING FACTOR 2
<b>Immunogen:</b>	KLH-conjugated synthetic peptide (16 aa from Central section) derived from <i>Arabidopsis thaliana</i> EPF2 (AT1G34245).
<b>Form:</b>	Lyophilized
<b>Quantity:</b>	150 µg
<b>Purification:</b>	Immunogen affinity purified
<b>Reconstitution:</b>	Reconstitution with 150 µl of sterile 1XPBS (PH=7.4) containing 30% glycerol. "Note: please spin tube briefly prior to opening it to avoid any losses that might occur from lyophilized material adhering to the cap or sides of the tube".
<b>Stability &amp; Storage:</b>	Use a manual defrost freezer and avoid repeated freeze-thaw cycles. 12 months from date of receipt, -20 to -70°C as supplied. 6 months, -20 to -70°C under sterile conditions after reconstitution. 1 month, 2 to 8°C under sterile conditions after reconstitution.
<b>Shipping:</b>	The product is shipped at 4°C. Upon receipt, store it immediately at the temperature recommended above.

## Application Information

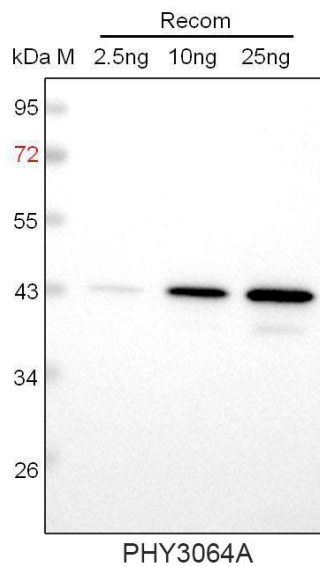
<b>Recommended Dilution:</b>	Western Blot (1:1000-1:2000) Note: Optimal dilutions/concentrations should be determined by the end user.
<b>Expected / apparent MW:</b>	13 kDa
<b>Predicted Reactivity:</b>	Among species analyzed, the sequence of the synthetic peptide used

Research Use Only

for immunization is 100% homologues with the sequence in *Brassica rapa*, *Brassica napus*, and 80-99% homologues with the sequence in *Solanum tuberosum*, *Solanum lycopersicum*, *Gossypium raimondii*, *Cucumis sativus*, *Populus trichocarpa*, *Nicotiana tabacum*.

For more species homologues information, please contact tech support at [tech@phytoab.com](mailto:tech@phytoab.com).

### Application Example



Recom: 2.5 ng, 10 ng and 25 ng recombinant protein containing the peptide for immunization and having a molecular mass of 43 kDa.

**Electrophoresis:** 12% SDS-PAGE

**Transfer:** blotting to NC (nitrocellulose) membrane for 1 h.

**Blocking:** 5% skim milk at RT or 4°C for 1 h.

**Primary antibody:** 1:1000 dilution overnight at 4°C.

**Secondary antibody:** 1:10000 dilution using Goat Anti-Rabbit IgG H&L (HRP) (Cat# PHY6000).

**Detection:** using chemiluminescence substrate and image were captured with CCD camera.