

# Anti-Chloroplast ribonucleoprotein 31A antibody

Catalog: PHY8008S

## Product Information

<b>Description:</b>	Rabbit polyclonal antibody
<b>Background:</b>	CP31A is a chloroplast RNA-binding protein required for editing and stability of specific chloroplast mRNAs. It is also required for normal chloroplast development under cold stress conditions by stabilizing transcripts of numerous mRNAs under these conditions.
<b>Synonyms:</b>	RBP31 (31-KDA RNA BINDING PROTEIN) (Primary Symbol), CP31A, CP31, ATRBP33, ATRBP31 (ARABIDOPSIS THALIANA RNA BINDING PROTEIN, APPROXIMATELY 31 KD)
<b>Immunogen:</b>	KLH-conjugated synthetic peptide (15 aa from central section) derived from <i>Arabidopsis thaliana</i> CP31A (AT4G24770).
<b>Form:</b>	Lyophilized
<b>Quantity:</b>	150 µg
<b>Purification:</b>	Serum Peptide affinity form antibody available upon request at <a href="mailto:info@phytoab.com">info@phytoab.com</a> .
<b>Reconstitution:</b>	Reconstitution with 150 µl of sterile water. "Note: please spin tube briefly prior to opening it to avoid any losses that might occur from lyophilized material adhering to the cap or sides of the tube".
<b>Stability &amp; Storage:</b>	Use a manual defrost freezer and avoid repeated freeze-thaw cycles. 12 months from date of receipt, -20 to -70°C as supplied. 6 months, -20 to -70°C under sterile conditions after reconstitution. 1 month, 2 to 8°C under sterile conditions after reconstitution.
<b>Shipping:</b>	The product is shipped at 4°C. Upon receipt, store it immediately at the temperature recommended above.

## Application Information

<b>Recommended Dilution:</b>	Western Blot (1:1000-1:2000) Note: Optimal dilutions/concentrations should be determined by the end user.
<b>Expected / apparent MW:</b>	36 kDa

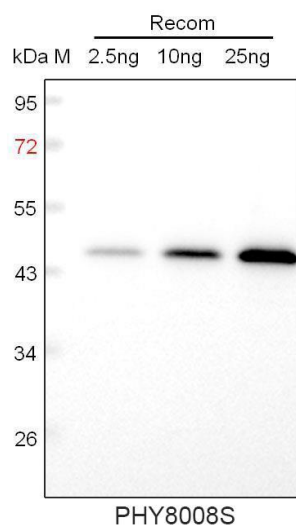
Research Use Only

### Predicted Reactivity:

Among species analyzed, the sequence of the synthetic peptide used for immunization is 100% homologues with the sequence in *Brassica napus*, *Brassica rapa*, *Zea mays*, *Hordeum vulgare*, *Glycine max*, *Triticum aestivum*, *Populus trichocarpa*, and 93% homologues with the sequence in *Oryza sativa*, *Nicotiana tabacum*, *Solanum lycopersicum*, *Spinacia oleracea*, *Cucumis sativus*, *Solanum tuberosum*, *Setaria viridis*, *Vitis vinifera*, *Panicum virgatum*, *Sorghum bicolor*.

For more species homologues information, please contact tech support at [tech@phytoab.com](mailto:tech@phytoab.com).

### Application Example



Recom: 2.5 ng, 10 ng and 25 ng recombinant protein containing the peptide for immunization and having a molecular mass of 45 kDa.

**Electrophoresis:** 12% SDS-PAGE

**Transfer:** blotting to NC (nitrocellulose) membrane for 1 h.

**Blocking:** 5% skim milk at RT or 4°C for 1 h.

**Primary antibody:** 1:1000 dilution overnight at 4°C.

**Secondary antibody:** 1:10000 dilution using Goat Anti-Rabbit IgG H&L (HRP) (Cat# PHY6000).

**Detection:** using chemiluminescence substrate and image were captured with CCD camera.