

# Anti-ALTERNATIVE OXIDASE 1 antibody

Catalog: PHY3047S

## Product Information

<b>Description:</b>	Rabbit polyclonal antibody
<b>Background:</b>	Alternative oxidases (AOX) are quinol oxidases located in the inner mitochondrial membrane of plants. They function as terminal oxidases in the alternate electron transport pathway, oxidizing ubiquinone to reduce oxygen to water. AOX isoenzymes are including AOX1A (AT3G22370), AOX1B (AT3G22360), AOX1C (AT3G27620) and AOX1D (AT1G32350) from <i>Arabidopsis</i> .
<b>Synonyms:</b>	ALTERNATIVE OXIDASE 1A, AOX1A, ATAOX1A, ATHSR3, HSR3, HYPER-SENSITIVITY-RELATED 3, AOX1B, AOX1C
<b>Immunogen:</b>	KLH-conjugated synthetic peptide (14 aa from central section) derived from <i>Arabidopsis thaliana</i> AOX1A (AT3G22370), AOX1B (AT3G22360), and AOX1C (AT3G27620)
<b>Form:</b>	Lyophilized
<b>Quantity:</b>	150 µg
<b>Purification:</b>	Serum
<b>Reconstitution:</b>	Peptide affinity form antibody available upon request at <a href="mailto:info@phytoab.com">info@phytoab.com</a> . Reconstitution with 150 µl of sterile water. "Note: please spin tube briefly prior to opening it to avoid any losses that might occur from lyophilized material adhering to the cap or sides of the tube".
<b>Stability &amp; Storage:</b>	Use a manual defrost freezer and avoid repeated freeze-thaw cycles. 12 months from date of receipt, -20 to -70°C as supplied. 6 months, -20 to -70°C under sterile conditions after reconstitution. 1 month, 2 to 8°C under sterile conditions after reconstitution.
<b>Shipping:</b>	The product is shipped at 4°C. Upon receipt, store it immediately at the temperature recommended above.

## Application Information

<b>Recommended Dilution:</b>	Western Blot (1:1000-1:2000)  Note: Optimal dilutions/concentrations should be determined by the end user.
------------------------------	--

Research Use Only

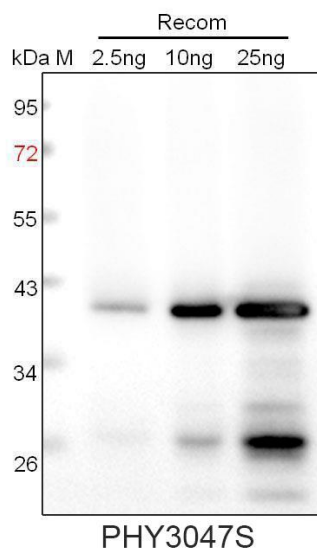
**Expected / apparent MW:** 40 kDa

**Predicted Reactivity:** Among species analyzed, the sequence of the synthetic peptide used for immunization is 100% homologues with the sequence in *Brassica napus*, *Brassica rapa*, *Populus trichocarpa*, *Nicotiana tabacum*, *Solanum lycopersicum*, *Medicago truncatula*, *Solanum tuberosum*, and 93% homologues with the sequence in *Glycine max*, *Spinacia oleracea*, *Gossypium raimondii*, *Vitis vinifera*.

The sequence of the synthetic peptide used for immunization is 93% homologues with the sequence in AOX1D (AT1G32350).

For more species homologues information, please contact tech support at [tech@phytoab.com](mailto:tech@phytoab.com).

## Application Example



Recom: 2.5 ng, 10 ng and 25 ng recombinant protein containing the peptide for immunization and having a molecular mass of 41 kDa.

**Electrophoresis:** 12% SDS-PAGE

**Transfer:** blotting to NC (nitrocellulose) membrane for 1 h.

**Blocking:** 5% skim milk at RT or 4°C for 1 h.

**Primary antibody:** 1:1000 dilution overnight at 4°C.

**Secondary antibody:** 1:10000 dilution using Goat Anti-Rabbit IgG H&L (HRP) (Cat# PHY6000).

**Detection:** using chemiluminescence substrate and image were captured with CCD camera.