

Anti-Os03g0133300/OsESV1 antibody

Catalog: PHY4379A

Product Information

Description:	Rabbit polyclonal antibody
Background:	ESV1 is required for the control of starch degradation in leaves and starch distribution in nonphotosynthetic parts. It is involved in the organization of the starch granule matrix, thus influencing starch turnover by modulating the accessibility of starch polymers to modifying and degrading enzymes.
Synonyms:	ESV1, OsESV1, LSD2, OsLSD2, LA3, OsLA3, EARLY STARVATION 1, leaf starch deficiency 2, LAZY3, LAZY 3, early starvation 1
Immunogen:	KLH-conjugated synthetic peptide (16 aa from central section) derived from <i>Oryza sativa</i> ESV1 (Os03g0133300).
Form:	Lyophilized
Quantity:	150 µg
Purification:	Immunogen affinity purified
Reconstitution:	Reconstitution with 150 µl of sterile 1XPBS (PH=7.4) containing 30% glycerol. "Note: please spin tube briefly prior to opening it to avoid any losses that might occur from lyophilized material adhering to the cap or sides of the tube".
Stability & Storage:	Use a manual defrost freezer and avoid repeated freeze-thaw cycles. 12 months from date of receipt, -20 to -70°C as supplied. 6 months, -20 to -70°C under sterile conditions after reconstitution. 1 month, 2 to 8°C under sterile conditions after reconstitution.
Shipping:	The product is shipped at 4°C. Upon receipt, store it immediately at the temperature recommended above.

Application Information

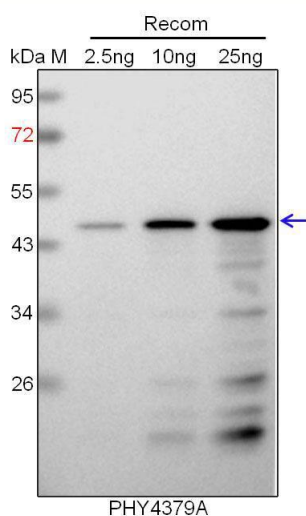
Recommended Dilution:	Western Blot (1:1000-1:2000) Note: Optimal dilutions/concentrations should be determined by the end user.
Expected / apparent MW:	49 kDa
Predicted Reactivity:	Among species analyzed, the sequence of the synthetic peptide used for immunization is 100% homologues with the sequence in <i>Hordeum</i>

Research Use Only

vulgare, and 94% homologues with the sequence in *Sorghum bicolor*, *Panicum virgatum*, *Triticum aestivum*, *Setaria viridis*, *Panicum virgatum*, *Zea mays*, *Nicotiana tabacum*, *Solanum tuberosum*, *Cucumis sativus*, and 88% homologues with the sequence in *Glycine max*, *Spinacia oleracea*, *Solanum lycopersicum*, *Gossypium raimondii*.

For more species homologues information, please contact tech support at tech@phytoab.com.

Application Example



Recom: 2.5 ng, 10 ng and 25 ng recombinant protein containing the peptide for immunization and having a molecular mass of 45 kDa.

Electrophoresis: 12% SDS-PAGE

Transfer: blotting to NC (nitrocellulose) membrane for 1 h.

Blocking: 5% skim milk at RT or 4°C for 1 h.

Primary antibody: 1:1000 dilution overnight at 4°C.

Secondary antibody: 1:10000 dilution using Goat Anti-Rabbit IgG H&L (HRP) (Cat# PHY6000).

Detection: using chemiluminescence substrate and image were captured with CCD camera.