

Anti-VACUOLAR PROTEIN SORTING 29 antibody

Catalog: PHY2881S

Product Information

Description:	Rabbit polyclonal antibody
Background:	VPS29 is a component of the membrane-associated retromer complex which is essential in endosome-to-Golgi retrograde transport. It is required for the auxin-carrier protein PIN2 sorting to the lytic vacuolar pathway and the PIN1 recycling to the plasma membrane. VPS29 is also involved in the efficient sorting of seed storage proteins globulin 12S and albumin 2S.
Synonyms:	VPS29, ATPVPS29, MAG1, MAIGO 1, VACUOLAR PROTEIN SORTING 29
Immunogen:	KLH-conjugated synthetic peptide (15 aa from N terminal section) derived from <i>Arabidopsis thaliana</i> VPS29 (AT3G47810).
Form:	Lyophilized
Quantity:	150 µg
Purification:	Serum Peptide affinity form antibody available upon request at info@phytoab.com .
Reconstitution:	Reconstitution with 150 µl of sterile water. "Note: please spin tube briefly prior to opening it to avoid any losses that might occur from lyophilized material adhering to the cap or sides of the tube".
Stability & Storage:	Use a manual defrost freezer and avoid repeated freeze-thaw cycles. 12 months from date of receipt, -20 to -70°C as supplied. 6 months, -20 to -70°C under sterile conditions after reconstitution. 1 month, 2 to 8°C under sterile conditions after reconstitution.
Shipping:	The product is shipped at 4°C. Upon receipt, store it immediately at the temperature recommended above.

Application Information

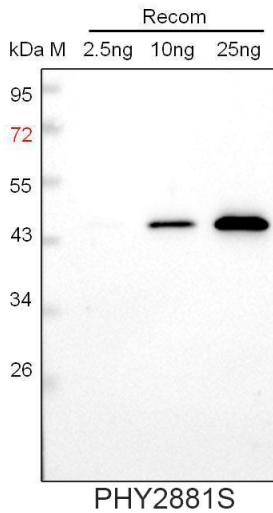
Recommended Dilution:	Western Blot (1:1000-1:2000) Note: Optimal dilutions/concentrations should be determined by the end user.
Expected/apparent MW:	21 kDa
Predicted Reactivity:	Among 25 analyzed species, the sequence of the synthetic peptide used for immunization is 100% homologues with the sequence in

Research Use Only

Brassica napus, *Brassica rapa* and 93% homologues with the sequence in *Gossypium raimondii*, *Medicago truncatula*.

For more species homologues information, please contact tech support at tech@phytoab.com.

Application Example



Recom: 2.5 ng, 10 ng and 25 ng recombinant protein containing the peptide for immunization and having a molecular mass of 47 kDa.

Electrophoresis: 12% SDS-PAGE

Transfer: blotting to NC (nitrocellulose) membrane for 1 h.

Blocking: 5% skim milk at RT or 4°C for 1 h.

Primary antibody: 1:1000 dilution overnight at 4°C.

Secondary antibody: 1:10000 dilution using Goat Anti-Rabbit IgG H&L (HRP) (Cat# PHY6000).

Detection: using chemiluminescence substrate and image were captured with CCD camera.