

Anti-EDS16/ISOCHORISMATE SYNTHASE 1 antibody

Catalog: PHY7931S

Product Information

Description:	Rabbit polyclonal antibody
Background:	EDS16/ICS1 is an isochorismate synthase involved in the synthesis of salicylic acid (SA) required for both local and systemic acquired resistance. It is also involved in phylloquinone (vitamin K1) synthesis.
Synonyms:	EDS16, ARABIDOPSIS ISOCHORISMATE SYNTHASE 1, ATICS1, ENHANCED DISEASE SUSCEPTIBILITY TO ERYSIPIHE ORONTII 16, ICS1, ISOCHORISMATE SYNTHASE 1, SALICYLIC ACID INDUCTION DEFICIENT 2, SID2
Immunogen:	KLH-conjugated synthetic peptide (15 aa from central section) derived from <i>Arabidopsis thaliana</i> EDS16/ICS1 (AT1G74710).
Form:	Lyophilized
Quantity:	150 µg
Purification:	Serum Peptide affinity form antibody available upon request at info@phytoab.com .
Reconstitution:	Reconstitution with 150 µl of sterile water. "Note: please spin tube briefly prior to opening it to avoid any losses that might occur from lyophilized material adhering to the cap or sides of the tube".
Stability & Storage:	Use a manual defrost freezer and avoid repeated freeze-thaw cycles. 12 months from date of receipt, -20 to -70°C as supplied. 6 months, -20 to -70°C under sterile conditions after reconstitution. 1 month, 2 to 8°C under sterile conditions after reconstitution.
Shipping:	The product is shipped at 4°C. Upon receipt, store it immediately at the temperature recommended above.

Application Information

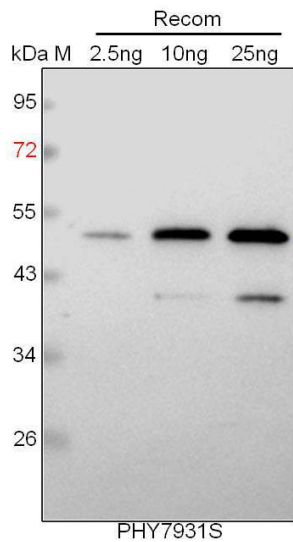
Recommended Dilution:	Western Blot (1:1000-1:2000) Note: Optimal dilutions/concentrations should be determined by the end user.
Expected/apparent MW:	69 kDa

Research Use Only

Predicted Reactivity:

For more species homologues information, please contact tech support at tech@phytoab.com.

Application Example



Recom: 2.5 ng, 10 ng and 25 ng recombinant protein containing the peptide for immunization and having a molecular mass of 52 kDa.

Electrophoresis: 12% SDS-PAGE

Transfer: blotting to NC (nitrocellulose) membrane for 1 h.

Blocking: 5% skim milk at RT or 4°C for 1 h.

Primary antibody: 1:1000 dilution overnight at 4°C.

Secondary antibody: 1:10000 dilution using Goat Anti-Rabbit IgG H&L (HRP) (Cat# PHY6000).

Detection: using chemiluminescence substrate and image were captured with CCD camera.