

Anti-Serine/threonine protein kinase OSK1 antibody

Catalog: PHY4151S

Product Information

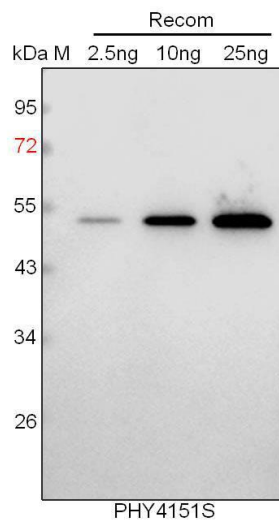
| | |
|---------------------------------|--|
| Description: | Rabbit polyclonal antibody |
| Background: | OSK1 is a serine/threonine-protein kinase involved in sugar signaling during germination and seedling growth. It acts as a negative regulator of sugar response complex (SRC) in alpha-amylase gene promoters, thus relieving SRC sugar repression in a MYBS1-dependent manner. |
| Synonyms: | osk1, SnRK1A, OsSnRK1A, OsSNRK1a, SnRK1A/OSK1, SnRK1a, OsSnRK1.2, SnRK1.2, OsSnRK1alphaA, SnRK1alphaA |
| Immunogen: | KLH-conjugated synthetic peptide (15 aa from central section) of derived from <i>Oryza sativa</i> OSK1 (Os05g0530500). |
| Form: | Lyophilized |
| Quantity: | 150 µg |
| Purification: | Serum |
| Reconstitution: | Peptide affinity form antibody available upon request at info@phytoab.com . Reconstitution with 150 µl of sterile water. "Note: please spin tube briefly prior to opening it to avoid any losses that might occur from lyophilized material adhering to the cap or sides of the tube". |
| Stability & Storage: | Use a manual defrost freezer and avoid repeated freeze-thaw cycles. 12 months from date of receipt, -20 to -70°C as supplied. 6 months, -20 to -70°C under sterile conditions after reconstitution. 1 month, 2 to 8°C under sterile conditions after reconstitution. |
| Shipping: | The product is shipped at 4°C. Upon receipt, store it immediately at the temperature recommended above. |

Application Information

| | |
|------------------------------|--|
| Recommended Dilution: | Western Blot (1:1000-1:2000) Note: Optimal dilutions/concentrations should be determined by the end user. |
| Expected/apparent MW: | 58 kDa |
| Predicted Reactivity: | For more species homologues information, please contact tech support at tech@phytoab.com . |

Research Use Only

Application Example



Recom: 2.5 ng, 10 ng and 25 ng recombinant protein containing the peptide for immunization and having a molecular mass of 52 kDa.

Electrophoresis: 12% SDS-PAGE

Transfer: blotting to NC (nitrocellulose) membrane for 1 h.

Blocking: 5% skim milk at RT or 4°C for 1 h.

Primary antibody: 1:1000 dilution overnight at 4°C.

Secondary antibody: 1:10000 dilution using Goat Anti-Rabbit IgG H&L (HRP) (Cat# PHY6000).

Detection: using chemiluminescence substrate and image were captured with CCD camera.