

# Anti-Cleavage and Polyadenylation Specificity Factor subunit 3-II antibody

Catalog: PHY3627A

## Product Information

<b>Description:</b>	Rabbit polyclonal antibody
<b>Background:</b>	CPSF73-II is an endonuclease in <i>Arabidopsis thaliana</i> that processes pre-mRNA 3' ends during transcription termination. It cleaves nascent transcripts to enable polyadenylation, ensuring proper mRNA maturation and stability. As part of the cleavage and polyadenylation complex, CPSF73-II is essential for gene expression fidelity and termination efficiency.
<b>Synonyms:</b>	CPSF73-II, ATCPSF73-II, CLEAVAGEAND POLYADENYLATION SPECIFICITY FACTOR 73 KDASUBUNIT-II, EDA26, EMBRYO SAC DEVELOPMENTARREST26
<b>Immunogen:</b>	KLH-conjugated synthetic peptide (15 aa from central section) derived from <i>Arabidopsis thaliana</i> CPSF73-II (AT2G01730).
<b>Form:</b>	Lyophilized
<b>Quantity:</b>	150 µg
<b>Purification:</b>	Immunogen affinity purified
<b>Reconstitution:</b>	Reconstitution with 150 µl of sterile 1XPBS (PH=7.4) containing 30% glycerol. "Note: please spin tube briefly prior to opening it to avoid any losses that might occur from lyophilized material adhering to the cap or sides of the tube".
<b>Stability &amp; Storage:</b>	Use a manual defrost freezer and avoid repeated freeze-thaw cycles. 12 months from date of receipt, -20 to -70°C as supplied. 6 months, -20 to -70°C under sterile conditions after reconstitution. 1 month, 2 to 8°C under sterile conditions after reconstitution.
<b>Shipping:</b>	The product is shipped at 4°C. Upon receipt, store it immediately at the temperature recommended above.

## Application Information

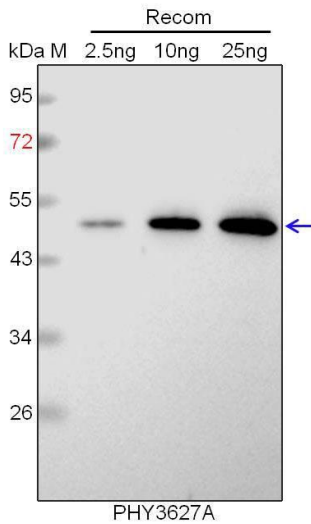
<b>Recommended Dilution:</b>	Western Blot (1:1000-1:2000) Note: Optimal dilutions/concentrations should be determined by the end user.
------------------------------	--

Research Use Only

**Expected / apparent MW:** 68 kDa

**Predicted Reactivity:** For more species homologues information, please contact tech support at [tech@phytoab.com](mailto:tech@phytoab.com).

#### Application Example



**Recom:** 2.5 ng, 10 ng and 25 ng recombinant protein containing the peptide for immunization and having a molecular mass of 50 kDa.

**Electrophoresis:** 12% SDS-PAGE

**Transfer:** blotting to NC (nitrocellulose) membrane for 1 h.

**Blocking:** 5% skim milk at RT or 4°C for 1 h.

**Primary antibody:** 1:1000 dilution overnight at 4°C.

**Secondary antibody:** 1:10000 dilution using Goat Anti-Rabbit IgG H&L (HRP) (Cat# PHY6000).

**Detection:** using chemiluminescence substrate and image were captured with CCD camera.