

Anti-RIBOSOMAL PROTEIN L23A A/B antibody

Catalog: PHY7939S

Product Information

Description:	Rabbit polyclonal antibody
Background:	RPL23AA and RPL23AB are structural constituent of 60S ribosome.
Synonyms:	RPL23AA, ARABIDOPSIS THALIANA RIBOSOMAL PROTEIN L23A, ATRPL23A, RIBOSOMAL PROTEIN L23A, RIBOSOMAL PROTEIN L23A1, RIBOSOMAL PROTEIN L23AA, RIBOSOMAL PROTEIN UL23Z, RPL23A, RPL23A1, UL23Z, RPL23AB (RIBOSOMAL PROTEIN L23AB) (Primary Symbol), UL23Y (RIBOSOMAL PROTEIN UL23Y), RPL23A2 (RIBOSOMAL PROTEIN L23A2).
Immunogen:	KLH-conjugated synthetic peptide (18 aa from C terminal section) derived from <i>Arabidopsis thaliana</i> RPL23AA/B (AT2G39460/AT3G55280)
Form:	Lyophilized
Quantity:	150 µg
Purification:	Serum Peptide affinity form antibody available upon request at info@phytoab.com .
Reconstitution:	Reconstitution with 150 µl of sterile water. "Note: please spin tube briefly prior to opening it to avoid any losses that might occur from lyophilized material adhering to the cap or sides of the tube".
Stability & Storage:	Use a manual defrost freezer and avoid repeated freeze-thaw cycles. 12 months from date of receipt, -20 to -70°C as supplied. 6 months, -20 to -70°C under sterile conditions after reconstitution. 1 month, 2 to 8°C under sterile conditions after reconstitution.
Shipping:	The product is shipped at 4°C. Upon receipt, store it immediately at the temperature recommended above.

Application Information

Recommended Dilution:	Western Blot (1:1000-1:2000) Note: Optimal dilutions/concentrations should be determined by the end user.
Expected/apparent MW:	17 kDa

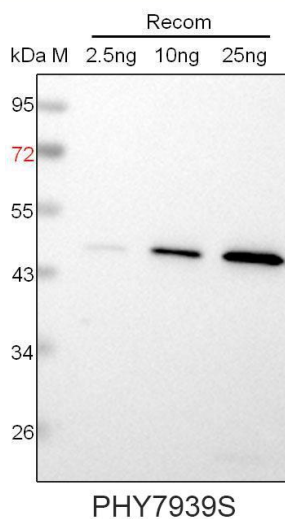
Research Use Only

Predicted Reactivity:

Among species analyzed, the sequence of the synthetic peptide used for immunization is 100% homologues with the sequence in *Glycine max*, *Nicotiana tabacum*, *Solanum lycopersicum*, *Brassica napus*, *Brassica rapa*, *Spinacia oleracea*, *Cucumis sativus*, *Medicago truncatula*, *Solanum tuberosum*, *Gossypium raimondii*, *Populus trichocarpa*, *Vitis vinifera*, and 89% homologues with the sequence in *Zea mays*, *Oryza sativa*, *Hordeum vulgare*, *Triticum aestivum*, *Setaria viridis*, *Panicum virgatum*, *Sorghum bicolor*, *Physcomitrella patens*.

For more species homologues information, please contact tech support at tech@phytoab.com.

Application Example



Recom: 2.5 ng, 10 ng and 25 ng recombinant protein containing the peptide for immunization and having a molecular mass of 46 kDa.

Electrophoresis: 12% SDS-PAGE

Transfer: blotting to NC (nitrocellulose) membrane for 1 h.

Blocking: 5% skim milk at RT or 4°C for 1 h.

Primary antibody: 1:1000 dilution overnight at 4°C.

Secondary antibody: 1:10000 dilution using Goat Anti-Rabbit IgG H&L (HRP) (Cat# PHY6000).

Detection: using chemiluminescence substrate and image were captured with CCD camera.