

# Anti-WUSCHEL protein antibody

Catalog: PHY1215A

## Product Information

|                                 |  |
|---------------------------------|--|
| <b>Description:</b>             | Rabbit polyclonal antibody   |
| <b>Background:</b>              | WUS (AT2G17950) is a key <i>Arabidopsis thaliana</i> transcription factor gene. Its primary function is to maintain stem cell identity and activity within the shoot apical meristem (SAM). WUS protein, produced in the organizing center, moves into the overlying stem cells to promote their undifferentiated state and continuous division. This activity is essential for the sustained growth and formation of all above-ground plant organs. |
| <b>Synonyms:</b>                | WUS, PGA6, WUS1, WUSCHEL, WUSCHEL 1  |
| <b>Immunogen:</b>               | KLH-conjugated synthetic peptide (15 aa from C terminal section) derived from <i>Arabidopsis thaliana</i> WUS (AT2G17950).   |
| <b>Form:</b>                    | Lyophilized  |
| <b>Quantity:</b>                | 150 µg   |
| <b>Purification:</b>            | Immunogen affinity purified  |
| <b>Reconstitution:</b>          | Reconstitution with 150 µl of sterile 1XPBS (PH=7.4) containing 30% glycerol.<br>"Note: please spin tube briefly prior to opening it to avoid any losses that might occur from lyophilized material adhering to the cap or sides of the tube".   |
| <b>Stability &amp; Storage:</b> | Use a manual defrost freezer and avoid repeated freeze-thaw cycles.<br>12 months from date of receipt, -20 to -70°C as supplied.<br>6 months, -20 to -70°C under sterile conditions after reconstitution.<br>1 month, 2 to 8°C under sterile conditions after reconstitution.  |
| <b>Shipping:</b>                | The product is shipped at 4°C. Upon receipt, store it immediately at the temperature recommended above.  |

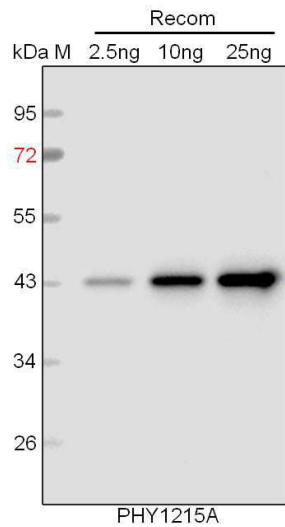
## Application Information

|                                |  |
|--------------------------------|--|
| <b>Recommended Dilution:</b>   | Western Blot (1:1000-1:2000)<br>Note: Optimal dilutions/concentrations should be determined by the end user. |
| <b>Expected / apparent MW:</b> | 33 kDa   |
| <b>Predicted Reactivity:</b>   | For more species homologues information, please contact tech   |

Research Use Only

support at [tech@phytoab.com](mailto:tech@phytoab.com).

### Application Example



Recom: 2.5 ng, 10 ng and 25 ng recombinant protein containing the peptide for immunization and having a molecular mass of 43 kDa.

**Electrophoresis:** 12% SDS-PAGE

**Transfer:** blotting to NC (nitrocellulose) membrane for 1 h.

**Blocking:** 5% skim milk at RT or 4°C for 1 h.

**Primary antibody:** 1:1000 dilution overnight at 4°C.

**Secondary antibody:** 1:10000 dilution using Goat Anti-Rabbit IgG H&L (HRP) (Cat# PHY6000).

**Detection:** using chemiluminescence substrate and image were captured with CCD camera.