

Anti-GLYCERALDEHYDE-3-PHOSPHATE DEHYDROGENASE GAPC antibody

Catalog: PHY7888A

Product Information

Description:	Rabbit polyclonal antibody
Background:	Glyceraldehyde 3-phosphate dehydrogenase (GAPDH) is an enzyme of ~37kDa that catalyzes the sixth step of glycolysis and thus serves to break down glucose for energy and carbon molecules. Plants contain both cytosolic and chloroplastic GAPDHs (glyceraldehyde-3-phosphate dehydrogenases). In <i>Arabidopsis thaliana</i> , cytosolic GAPDH is involved in the glycolytic pathway and is represented by two differentially expressed isoforms (GAPC1 AT3G04120 and GAPC2 AT1G13440) that are 98% identical in amino acid sequence.
Synonyms:	GAPC1, GAPC, GAPC2, GAPCP1, GAPCP2
Immunogen:	KLH-conjugated synthetic peptide (16 aa from C terminal section) derived from <i>Arabidopsis thaliana</i> GAPC1 (AT3G04120), GAPC2 (AT1G13440), GAPCP1 (AT1G79530) and GAPCP2 (AT1G16300).
Form:	Lyophilized
Quantity:	150 µg
Purification:	Immunogen affinity purified
Reconstitution:	Reconstitution with 150 µl of sterile 1XPBS (PH=7.4) containing 30% glycerol. "Note: please spin tube briefly prior to opening it to avoid any losses that might occur from lyophilized material adhering to the cap or sides of the tube".
Stability & Storage:	Use a manual defrost freezer and avoid repeated freeze-thaw cycles. 12 months from date of receipt, -20 to -70°C as supplied. 6 months, -20 to -70°C under sterile conditions after reconstitution. 1 month, 2 to 8°C under sterile conditions after reconstitution.
Shipping:	The product is shipped at 4°C. Upon receipt, store it immediately at the temperature recommended above.

Application Information

Recommended Dilution:	Western Blot (1:1000-1:2000)
	Note: Optimal dilutions/concentrations should be determined by the

Research Use Only

end user.

Expected / apparent MW:

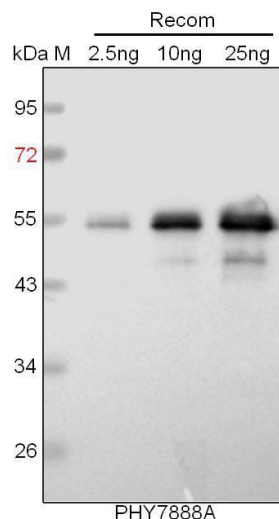
37 kDa

Predicted Reactivity:

Among species analyzed, the sequence of the synthetic peptide used for immunization is 100% homologues with the sequence in *Solanum tuberosum*, *Brassica napus*, *Brassica rapa*, *Vitis vinifera*, *Panicum virgatum*, *Zea mays*, *Triticum aestivum*, *Gossypium raimondii*, *Cucumis sativus*, *Nicotiana tabacum*, *Spinacia oleracea*, *Populus trichocarpa*, *Solanum lycopersicum*, *Glycine max*, *Medicago truncatula*, *Hordeum vulgare*, *Oryza sativa*, *Sorghum bicolor*, *Setaria viridis*.

For more species homologues information, please contact tech support at tech@phytoab.com.

Application Example



Recom: 2.5 ng, 10 ng and 25 ng recombinant protein containing the peptide for immunization and having a molecular mass of 53 kDa.

Electrophoresis: 12% SDS-PAGE

Transfer: blotting to NC (nitrocellulose) membrane for 1 h.

Blocking: 5% skim milk at RT or 4°C for 1 h.

Primary antibody: 1:1000 dilution overnight at 4°C.

Secondary antibody: 1:10000 dilution using Goat Anti-Rabbit IgG H&L (HRP) (Cat# PHY6000).

Detection: using chemiluminescence substrate and image were captured with CCD camera.