

Anti-VOLTAGE DEPENDENT ANION CHANNEL 4 antibody

Catalog: PHY0700S

Product Information

Description:	Rabbit polyclonal antibody
Background:	VDAC4 is a voltage-dependent anion channel in the mitochondrial outer membrane. It facilitates bidirectional transport of metabolites (e.g., ATP, organic ions), regulating energy homeostasis, respiration, and stress responses. VDAC4 modulates programmed cell death and redox signaling, with mutants showing altered mitochondrial permeability and oxidative stress sensitivity. VDAC4 is a member of voltage-dependent anion channel (AT3G01280/VDAC1, AT5G67500/VDAC2, AT5G15090/VDAC3, AT5G57490/VDAC4, AT5G15090/VDAC5).
Synonyms:	VDAC4, ARABIDOPSIS THALIANA VOLTAGE DEPENDENT ANION CHANNEL 4, ATVDAC4, VOLTAGE DEPENDENT ANION CHANNEL 4
Immunogen:	KLH-conjugated synthetic peptide (14 aa from central section) derived from <i>Arabidopsis thaliana</i> VDAC4 (AT5G57490).
Form:	Lyophilized
Quantity:	150 µg
Purification:	Serum Peptide affinity form antibody available upon request at info@phytoab.com .
Reconstitution:	Reconstitution with 150 µl of sterile water. "Note: please spin tube briefly prior to opening it to avoid any losses that might occur from lyophilized material adhering to the cap or sides of the tube".
Stability & Storage:	Use a manual defrost freezer and avoid repeated freeze-thaw cycles. 12 months from date of receipt, -20 to -70°C as supplied. 6 months, -20 to -70°C under sterile conditions after reconstitution. 1 month, 2 to 8°C under sterile conditions after reconstitution.
Shipping:	The product is shipped at 4°C. Upon receipt, store it immediately at the temperature recommended above.

Application Information

Recommended Dilution:	Western Blot (1:1000-1:2000)
------------------------------	------------------------------

Research Use Only

Note: Optimal dilutions/concentrations should be determined by the end user.

Expected/apparent MW:

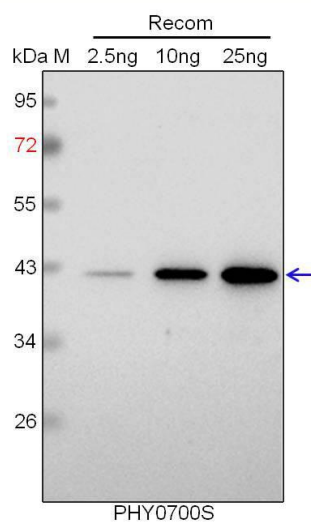
40 kDa

Predicted Reactivity:

Among 25 analyzed species, the sequence of the synthetic peptide used for immunization is 100% homologues with the sequence in *Brassica napus*, *Brassica rapa*.

For more species homologues information, please contact tech support at tech@phytoab.com.

Application Example



Recom: 2.5 ng, 10 ng and 25 ng recombinant protein containing the peptide for immunization and having a molecular mass of 42 kDa.

Electrophoresis: 12% SDS-PAGE

Transfer: blotting to NC (nitrocellulose) membrane for 1 h.

Blocking: 5% skim milk at RT or 4°C for 1 h.

Primary antibody: 1:1000 dilution overnight at 4°C.

Secondary antibody: 1:10000 dilution using Goat Anti-Rabbit IgG H&L (HRP) (Cat# PHY6000).

Detection: using chemiluminescence substrate and image were captured with CCD camera.