

Anti-PIP2-1/3/4/5/6/9 antibody

Catalog: PHY4526A

Product Information

Description:	Rabbit polyclonal antibody
Background:	PIP2-1/3/4/5/6
Synonyms:	PIP2-1/3/4/5/6
Immunogen:	KLH-conjugated synthetic peptide (15 aa from C terminal section) derived from <i>Oryza sativa</i> PIP2-1 (Os07g0448800), PIP2-3 (Os04g0521100), PIP2-4 (Os07g0448100), PIP2-5 (Os07g0448400), PIP2-6 (Os04g0233400) and PIP2-9 (Os07g0448200).
Form:	Lyophilized
Quantity:	150 µg
Purification:	Immunogen affinity purified
Reconstitution:	Reconstitution with 150 µl of sterile 1XPBS (PH=7.4) containing 30% glycerol. "Note: please spin tube briefly prior to opening it to avoid any losses that might occur from lyophilized material adhering to the cap or sides of the tube".
Stability & Storage:	Use a manual defrost freezer and avoid repeated freeze-thaw cycles. 12 months from date of receipt, -20 to -70°C as supplied. 6 months, -20 to -70°C under sterile conditions after reconstitution. 1 month, 2 to 8°C under sterile conditions after reconstitution.
Shipping:	The product is shipped at 4°C. Upon receipt, store it immediately at the temperature recommended above.

Application Information

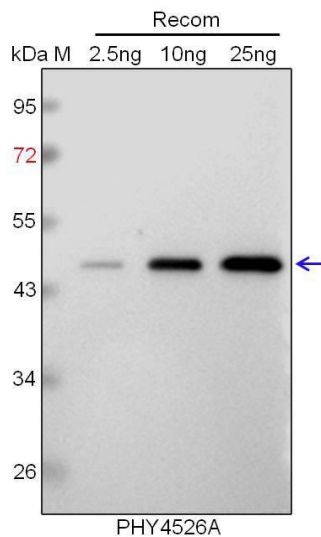
Recommended Dilution:	Western Blot (1:1000-1:2000) Note: Optimal dilutions/concentrations should be determined by the end user.
Expected / apparent MW:	30 kDa
Predicted Reactivity:	Among species analyzed, the sequence of the synthetic peptide used for immunization is 100% homologues with the sequence in <i>Brassica napus</i> , <i>Panicum virgatum</i> , <i>Sorghum bicolor</i> , <i>Glycine max</i> , <i>Arabidopsis thaliana</i> , <i>Vitis vinifera</i> , <i>Brassica rapa</i> , <i>Zea mays</i> , <i>Setaria viridis</i> ,

Research Use Only

Cucumis sativus, *Populus trichocarpa*, *Medicago truncatula*, *Nicotiana tabacum*, *Solanum tuberosum*. The sequence of the synthetic peptide used for immunization is 93% (14 / 15) homologues with the sequence in PIP2-2 (Os02g0629200), PIP2-8 (Os03g0861300), PIP2-1 (Os04g0559700), PIP1-1 (Os02g0666200) and PIP1-3 (Os02g0823100), and 80% (12 / 15) homologues with the sequence in Os10g0481100 and PIP2-7 (Os09g0541000).

For more species homologues information, please contact tech support at tech@phytoab.com.

Application Example



Recom: 2.5 ng, 10 ng and 25 ng recombinant protein containing the peptide for immunization and having a molecular mass of 46 kDa.

Electrophoresis: 12% SDS-PAGE

Transfer: blotting to NC (nitrocellulose) membrane for 1 h.

Blocking: 5% skim milk at RT or 4°C for 1 h.

Primary antibody: 1:1000 dilution overnight at 4°C.

Secondary antibody: 1:10000 dilution using Goat Anti-Rabbit IgG H&L (HRP) (Cat# PHY6000).

Detection: using chemiluminescence substrate and image were captured with CCD camera.