

# Anti-30S ribosomal protein S9, chloroplastic, C-terminal antibody

Catalog: PHY3025A

## Product Information

<b>Description:</b>	Rabbit polyclonal antibody
<b>Background:</b>	RPS9 is nuclear-encoded ribosomal protein S9 which is a constituent member of the small subunit of the chloroplast ribosome in higher plants. RPS9 can bind directly to 16S rRNA.
<b>Synonyms:</b>	PRPS9, RIBOSOMAL PROTEIN S9, RPS9, SOT8, TWN3
<b>Immunogen:</b>	KLH-conjugated synthetic peptide (18 aa from C terminal section) derived from <i>Arabidopsis thaliana</i> PRS9 (AT1G74970).
<b>Form:</b>	Lyophilized
<b>Quantity:</b>	150 µg
<b>Purification:</b>	Immunogen affinity purified
<b>Reconstitution:</b>	Reconstitution with 150 µl of sterile 1XPBS (PH=7.4) containing 30% glycerol. "Note: please spin tube briefly prior to opening it to avoid any losses that might occur from lyophilized material adhering to the cap or sides of the tube".
<b>Stability &amp; Storage:</b>	Use a manual defrost freezer and avoid repeated freeze-thaw cycles. 12 months from date of receipt, -20 to -70°C as supplied. 6 months, -20 to -70°C under sterile conditions after reconstitution. 1 month, 2 to 8°C under sterile conditions after reconstitution.
<b>Shipping:</b>	The product is shipped at 4°C. Upon receipt, store it immediately at the temperature recommended above.

## Application Information

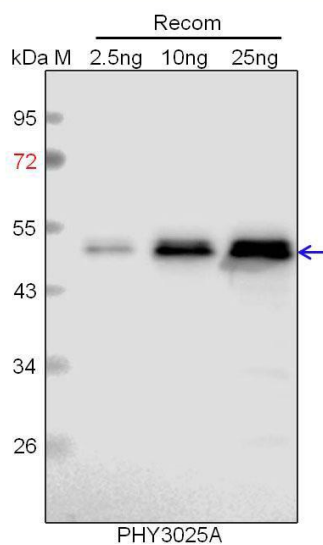
<b>Recommended Dilution:</b>	Western Blot (1:1000-1:2000) Note: Optimal dilutions/concentrations should be determined by the end user.
<b>Expected / apparent MW:</b>	23/17 kDa
<b>Predicted Reactivity:</b>	Among species analyzed, the sequence of the synthetic peptide used for immunization is 100% homologues with the sequence in <i>Cucumis</i>

Research Use Only

*sativus*, and 80-99% homologues with the sequence in *Vitis vinifera*, *Brassica rapa*, *Brassica napus*, *Populus trichocarpa*, *Gossypium raimondii*, *Spinacia oleracea*, *Hordeum vulgare*, *Panicum virgatum*, *Glycine max*, *Medicago truncatula*, *Solanum tuberosum*, *Nicotiana tabacum*, *Solanum lycopersicum*, *Physcomitrium patens*, *Setaria viridis*, *Zea mays*, *Sorghum bicolor*, *Oryza sativa*.

For more species homologues information, please contact tech support at [tech@phytoab.com](mailto:tech@phytoab.com).

### Application Example



Recom: 2.5 ng, 10 ng and 25 ng recombinant protein containing the peptide for immunization and having a molecular mass of 52 kDa.

**Electrophoresis:** 12% SDS-PAGE

**Transfer:** blotting to NC (nitrocellulose) membrane for 1 h.

**Blocking:** 5% skim milk at RT or 4°C for 1 h.

**Primary antibody:** 1:1000 dilution overnight at 4°C.

**Secondary antibody:** 1:10000 dilution using Goat Anti-Rabbit IgG H&L (HRP) (Cat# PHY6000).

**Detection:** using chemiluminescence substrate and image were captured with CCD camera.