

Anti-1-deoxy-D-xylulose-5-phosphate synthase, chloroplastic antibody

Catalog: PHY0848A

Product Information

Description:	Rabbit polyclonal antibody
Background:	CLA1 is a protein with 1-deoxyxylulose 5-phosphate synthase activity involved in the MEP pathway. It is essential for chloroplast development in Arabidopsis. It is a limiting enzyme for plastidic isoprenoid biosynthesis and essential for chloroplast development.
Synonyms:	CLA1, DXS, AtDXS, DEF, 1-DEOXY-D-XYLULOSE 5-PHOSPHATE (DXP) SYNTHASE 1, 1-DEOXY-D-XYLULOSE 5-PHOSPHATE SYNTHASE, 1-DEOXY-D-XYLULOSE 5-PHOSPHATE SYNTHASE 2, ATCLA1, CLA, CLOROPLASTOS ALTERADOS 1, DXPS2, DXS1.
Immunogen:	KLH-conjugated synthetic peptide (17 aa from Central section) derived from Arabidopsis thaliana CLA1 (AT4G15560).
Form:	Lyophilized
Quantity:	150 µg
Purification:	Immunogen affinity purified
Reconstitution:	Reconstitution with 150 µl of sterile 1XPBS (PH=7.4) containing 30% glycerol. "Note: please spin tube briefly prior to opening it to avoid any losses that might occur from lyophilized material adhering to the cap or sides of the tube".
Stability & Storage:	Use a manual defrost freezer and avoid repeated freeze-thaw cycles. 12 months from date of receipt, -20 to -70°C as supplied. 6 months, -20 to -70°C under sterile conditions after reconstitution. 1 month, 2 to 8°C under sterile conditions after reconstitution.
Shipping:	The product is shipped at 4°C. Upon receipt, store it immediately at the temperature recommended above.

Application Information

Recommended Dilution:	Western Blot (1:1000-1:2000) Note: Optimal dilutions/concentrations should be determined by the end user.
------------------------------	--

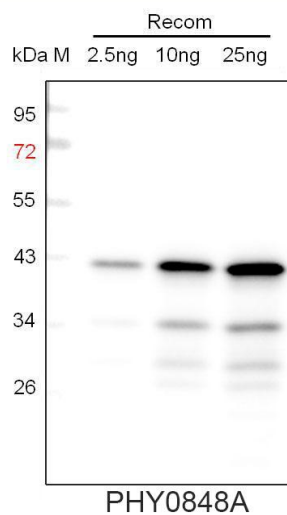
Research Use Only

Expected / apparent MW: 77 kDa

Predicted Reactivity: Among species analyzed, the sequence of the synthetic peptide used for immunization is 80-99% homologues with the sequence in *Brassica napus*, *Brassica rapa*, *Glycine max*, *Vitis vinifera*, *Gossypium raimondii*, *Populus trichocarpa*, *Solanum tuberosum*, *Solanum lycopersicum*, *Cucumis sativus*, *Nicotiana tabacum*, *Medicago truncatula*, *Spinacia oleracea*.

For more species homologues information, please contact tech support at tech@phytoab.com.

Application Example



Recom: 2.5 ng, 10 ng and 25 ng recombinant protein containing the peptide for immunization and having a molecular mass of 43 kDa.

Electrophoresis: 12% SDS-PAGE

Transfer: blotting to NC (nitrocellulose) membrane for 1 h.

Blocking: 5% skim milk at RT or 4°C for 1 h.

Primary antibody: 1:1000 dilution overnight at 4°C.

Secondary antibody: 1:10000 dilution using Goat Anti-Rabbit IgG H&L (HRP) (Cat# PHY6000).

Detection: using chemiluminescence substrate and image were captured with CCD camera.