

Anti-OsSWEET11 antibody

Catalog: PHY4605S

Product Information

Description:	Rabbit polyclonal antibody
Background:	OsSWEET11 is a bidirectional sugar transporter that mediates both low-affinity uptake and efflux of sugar across the plasma membrane. It is required for pollen viability and is involved in the transport of copper in cooperation with COPT1 and COPT2.
Synonyms:	XA13, Os8N3, OsSWEET11, xa13, xa13/Os8N3, Xa13, Os-8N3, 8N3, SWEET11, OsSWEET11/Xa13, Xa13/Os8N3/SWEET11, Os8N3/Xa13, OsSWEET11/Os8N3, OsSWEET11a, SWEET11a
Immunogen:	KLH-conjugated synthetic peptide (15 aa from central section) derived from <i>Oryza sativa</i> OsSWEET11 (Os08g0535200).
Form:	Lyophilized
Quantity:	150 µg
Purification:	Serum Peptide affinity form antibody available upon request at info@phytoab.com .
Reconstitution:	Reconstitution with 150 µl of sterile water. "Note: please spin tube briefly prior to opening it to avoid any losses that might occur from lyophilized material adhering to the cap or sides of the tube".
Stability & Storage:	Use a manual defrost freezer and avoid repeated freeze-thaw cycles. 12 months from date of receipt, -20 to -70°C as supplied. 6 months, -20 to -70°C under sterile conditions after reconstitution. 1 month, 2 to 8°C under sterile conditions after reconstitution.
Shipping:	The product is shipped at 4°C. Upon receipt, store it immediately at the temperature recommended above.

Application Information

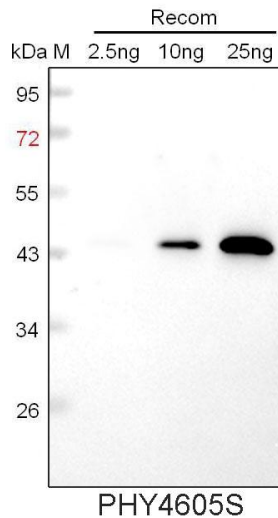
Recommended Dilution:	Western Blot (1:1000-1:2000) Note: Optimal dilutions/concentrations should be determined by the end user.
Expected/apparent MW:	33 kDa

Research Use Only

Predicted Reactivity:

For more species homologues information, please contact tech support at tech@phytoab.com.

Application Example



Recom: 2.5 ng, 10 ng and 25 ng recombinant protein containing the peptide for immunization and having a molecular mass of 44 kDa.

Electrophoresis: 12% SDS-PAGE

Transfer: blotting to NC (nitrocellulose) membrane for 1 h.

Blocking: 5% skim milk at RT or 4°C for 1 h.

Primary antibody: 1:1000 dilution overnight at 4°C.

Secondary antibody: 1:10000 dilution using Goat Anti-Rabbit IgG H&L (HRP) (Cat# PHY6000).

Detection: using chemiluminescence substrate and image were captured with CCD camera.