

Anti-Bidirectional sugar transporter SWEET11, C-terminal antibody

Catalog: PHY4604A

Product Information

Description:	Rabbit polyclonal antibody
Background:	OsSWEET11 mediates both low-affinity uptake and efflux of sugar across the plasma membrane. It required for pollen viability. And it is involved in the transport of copper, in cooperation with COPT1 and COPT2.
Synonyms:	OsSWEET11, XA13, Os8N3, OsSWEET11, xa13, xa13/Os8N3, Xa13, Os-8N3, 8N3, SWEET11, OsSWEET11/Xa13, Xa13/Os8N3/SWEET11, Os8N3/Xa13, OsSWEET11/Os8N3, OsSWEET11a, SWEET11a
Immunogen:	KLH-conjugated synthetic peptide (14 aa from C terminal section) derived from <i>Oryza sativa</i> OsSWEET11 (Os08g0535200).
Form:	Lyophilized
Quantity:	150 µg
Purification:	Immunogen affinity purified
Reconstitution:	Reconstitution with 150 µl of sterile 1×PBS (PH=7.4) containing 30% glycerol. "Note: please spin tube briefly prior to opening it to avoid any losses that might occur from lyophilized material adhering to the cap or sides of the tube".
Stability & Storage:	Use a manual defrost freezer and avoid repeated freeze-thaw cycles. 12 months from date of receipt, -20 to -70°C as supplied. 6 months, -20 to -70°C under sterile conditions after reconstitution. 1 month, 2 to 8°C under sterile conditions after reconstitution.
Shipping:	The product is shipped at 4°C. Upon receipt, store it immediately at the temperature recommended above.

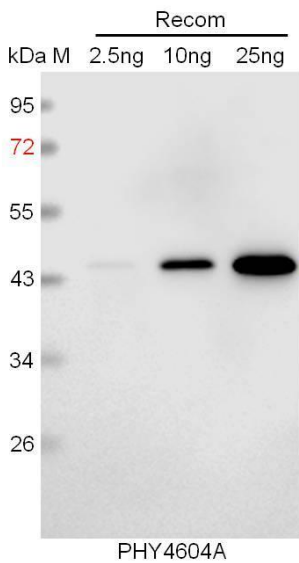
Application Information

Recommended Dilution:	Western Blot (1:1000-1:2000) Note: Optimal dilutions/concentrations should be determined by the end user.
Expected / apparent MW:	33 kDa
Predicted Reactivity:	For more species homologues information, please contact tech

Research Use Only

support at tech@phytoab.com.

Application Example



Recom: 2.5 ng, 10 ng and 25 ng recombinant protein containing the peptide for immunization and having a molecular mass of 45 kDa.

Electrophoresis: 12% SDS-PAGE

Transfer: blotting to NC (nitrocellulose) membrane for 1 h.

Blocking: 5% skim milk at RT or 4°C for 1 h.

Primary antibody: 1:1000 dilution overnight at 4°C.

Secondary antibody: 1:10000 dilution using Goat Anti-Rabbit IgG H&L (HRP) (Cat# PHY6000).

Detection: using chemiluminescence substrate and image were captured with CCD camera.