

Anti-Bidirectional sugar transporter SWEET11 antibody

Catalog: PHY4605A

Product Information

| | |
|---------------------------------|---|
| Description: | Rabbit polyclonal antibody |
| Background: | OsSWEET11 mediates both low-affinity uptake and efflux of sugar across the plasma membrane. It required for pollen viability. And it is involved in the transport of copper, in cooperation with COPT1 and COPT2. |
| Synonyms: | OsSWEET11, XA13, Os8N3, OsSWEET11, xa13, xa13/Os8N3, Xa13, Os-8N3, 8N3, SWEET11, OsSWEET11/Xa13, Xa13/Os8N3/SWEET11, Os8N3/Xa13, OsSWEET11/Os8N3, OsSWEET11a, SWEET11a |
| Immunogen: | KLH-conjugated synthetic peptide (15 aa from C terminal section) derived from <i>Oryza sativa</i> OsSWEET11 (Os08g0535200). |
| Form: | Lyophilized |
| Quantity: | 150 µg |
| Purification: | Immunogen affinity purified |
| Reconstitution: | Reconstitution with 150 µl of sterile 1×PBS (PH=7.4) containing 30% glycerol. "Note: please spin tube briefly prior to opening it to avoid any losses that might occur from lyophilized material adhering to the cap or sides of the tube". |
| Stability & Storage: | Use a manual defrost freezer and avoid repeated freeze-thaw cycles. 12 months from date of receipt, -20 to -70°C as supplied. 6 months, -20 to -70°C under sterile conditions after reconstitution. 1 month, 2 to 8°C under sterile conditions after reconstitution. |
| Shipping: | The product is shipped at 4°C. Upon receipt, store it immediately at the temperature recommended above. |

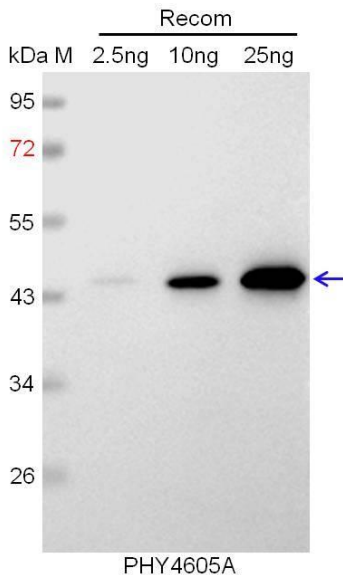
Application Information

| | |
|--------------------------------|--|
| Recommended Dilution: | Western Blot (1:1000-1:2000) Note: Optimal dilutions/concentrations should be determined by the end user. |
| Expected / apparent MW: | 33 kDa |
| Predicted Reactivity: | Among species analyzed, the sequence of the synthetic peptide used for immunization is 87% homologues with the sequence in <i>Panicum virgatum</i> . |

Research Use Only

For more species homologues information, please contact tech support at tech@phytoab.com.

Application Example



Recom: 2.5 ng, 10 ng and 25 ng recombinant protein containing the peptide for immunization and having a molecular mass of 45 kDa.

Electrophoresis: 12% SDS-PAGE

Transfer: blotting to NC (nitrocellulose) membrane for 1 h.

Blocking: 5% skim milk at RT or 4°C for 1 h.

Primary antibody: 1:1000 dilution overnight at 4°C.

Secondary antibody: 1:10000 dilution using Goat Anti-Rabbit IgG H&L (HRP) (Cat# PHY6000).

Detection: using chemiluminescence substrate and image were captured with CCD camera.