

Anti-Histone H2AX, N-terminal antibody

Catalog: PHY7729A

Product Information

Description:	Rabbit polyclonal antibody
Background:	AT1G08880 (H2AXA) and AT1G54690 (H2AXB) encode specialized H2A histone variants in <i>Arabidopsis thaliana</i> . They are rapidly phosphorylated at DNA double-strand breaks, forming γ H2AX foci. This phosphorylation acts as a critical signal recruiting DNA repair machinery to the damage site, conserved in eukaryotes.
Synonyms:	H2AX, G-H2AX, GAMMA H2AX, GAMMA HISTONE VARIANT H2AX, GAMMA-H2AX, HTA3/5, HISTONE H2A 3/5
Immunogen:	KLH-conjugated synthetic peptide (15 aa from N terminal section) derived from <i>Arabidopsis thaliana</i> H2AXA (AT1G08880) and H2AXB (AT1G54690).
Form:	Lyophilized
Quantity:	150 μ g
Purification:	Immunogen affinity purified
Reconstitution:	Reconstitution with 150 μ l of sterile 1 \times PBS (PH=7.4) containing 30% glycerol. "Note: please spin tube briefly prior to opening it to avoid any losses that might occur from lyophilized material adhering to the cap or sides of the tube".
Stability & Storage:	Use a manual defrost freezer and avoid repeated freeze-thaw cycles. 12 months from date of receipt, -20 to -70°C as supplied. 6 months, -20 to -70°C under sterile conditions after reconstitution. 1 month, 2 to 8°C under sterile conditions after reconstitution.
Shipping:	The product is shipped at 4°C. Upon receipt, store it immediately at the temperature recommended above.

Application Information

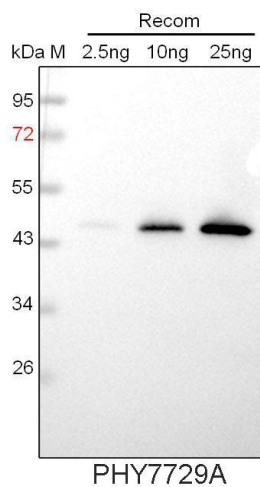
Recommended Dilution:	Western Blot (1:1000-1:2000) Note: Optimal dilutions/concentrations should be determined by the end user.
Expected / apparent MW:	15 kDa
Predicted Reactivity:	Among species analyzed, the sequence of the synthetic peptide used

Research Use Only

for immunization is 100% homologues with the sequence in *Cucumis sativus*, *Brassica napus*, *Brassica rapa*, and 80-99% homologues with the sequence in *Glycine max*, *Spinacia oleracea*, *Populus trichocarpa*, *Medicago truncatula*, *Vitis vinifera*, *Gossypium raimondii*, *Nicotiana tabacum*, *Solanum tuberosum*, *Hordeum vulgare*, *Solanum lycopersicum*.

For more species homologues information, please contact tech support at tech@phytoab.com.

Application Example



Recom: 2.5 ng, 10 ng and 25 ng recombinant protein containing the peptide for immunization and having a molecular mass of 45 kDa.

Electrophoresis: 12% SDS-PAGE

Transfer: blotting to NC (nitrocellulose) membrane for 1 h.

Blocking: 5% skim milk at RT or 4°C for 1 h.

Primary antibody: 1:1000 dilution overnight at 4°C.

Secondary antibody: 1:10000 dilution using Goat Anti-Rabbit IgG H&L (HRP) (Cat# PHY6000).

Detection: using chemiluminescence substrate and image were captured with CCD camera.