

Anti-ETHYLENE RESPONSE FACTOR 1, C-terminal antibody

Catalog: PHY2092A

Product Information

| | |
|---------------------------------|----------------------------------------------------------------------------------------------------------------------------------------------------------------------------------------------------------------------------------------------------------------------------------------------------------------------------|
| Description: | Rabbit polyclonal antibody |
| Background: | ERF1 is an Arabidopsis thaliana AP2/ERF transcription factor. It acts as a master regulator integrating ethylene and jasmonate signaling pathways. ERF1 activates defense genes against pathogens (bacteria, fungi) and enhances tolerance to abiotic stresses like drought and cold by binding GCC-box promoter elements. |
| Synonyms: | ERF1, ATERF#092, ERF1B, ETHYLENE RESPONSE FACTOR 1 |
| Immunogen: | KLH-conjugated synthetic peptide (15 aa from C terminal section) derived from <i>Arabidopsis thaliana</i> ERF1 (AT3G23240). |
| Form: | Lyophilized |
| Quantity: | 150 µg |
| Purification: | Immunogen affinity purified |
| Reconstitution: | Reconstitution with 150 µl of sterile 1×PBS (PH=7.4) containing 30% glycerol. "Note: please spin tube briefly prior to opening it to avoid any losses that might occur from lyophilized material adhering to the cap or sides of the tube". |
| Stability & Storage: | Use a manual defrost freezer and avoid repeated freeze-thaw cycles. 12 months from date of receipt, -20 to -70°C as supplied. 6 months, -20 to -70°C under sterile conditions after reconstitution. 1 month, 2 to 8°C under sterile conditions after reconstitution. |
| Shipping: | The product is shipped at 4°C. Upon receipt, store it immediately at the temperature recommended above. |

Application Information

| | |
|--------------------------------|--------------------------------------------------------------------------------------------------------------|
| Recommended Dilution: | Western Blot (1:1000-1:2000) Note: Optimal dilutions/concentrations should be determined by the end user. |
| Expected / apparent MW: | 25 kDa |

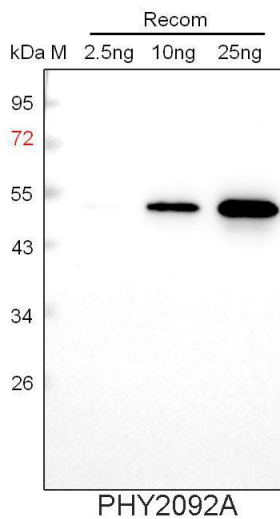
Research Use Only

Predicted Reactivity:

Among species analyzed, the sequence of the synthetic peptide used for immunization is 80-99% homologues with the sequence in *Brassica napus*, *Brassica rapa*.

For more species homologues information, please contact tech support at tech@phytoab.com.

Application Example



Recom: 2.5 ng, 10 ng and 25 ng recombinant protein containing the peptide for immunization and having a molecular mass of 53 kDa.

Electrophoresis: 12% SDS-PAGE

Transfer: blotting to NC (nitrocellulose) membrane for 1 h.

Blocking: 5% skim milk at RT or 4°C for 1 h.

Primary antibody: 1:1000 dilution overnight at 4°C.

Secondary antibody: 1:10000 dilution using Goat Anti-Rabbit IgG H&L (HRP) (Cat# PHY6000).

Detection: using chemiluminescence substrate and image were captured with CCD camera.