

Anti-OsDWARF14 antibody

Catalog: PHY4600S

Product Information

Description:	Rabbit polyclonal antibody
Background:	D14 is a dual-function receptor/hydrolase in rice that binds and hydrolyzes strigolactones (SLs). It triggers SL signaling by forming a complex with D3/MAX2 upon SL hydrolysis, leading to ubiquitination and degradation of repressors like D53. This pathway suppresses shoot branching and regulates root architecture and symbiotic interactions.
Synonyms:	D14, d14(d10), dwf13, d10, d14, D88, HTD2, OsD14, qPPB3, D88/D14, OsHTD2, HTD4
Immunogen:	KLH-conjugated synthetic peptide (16 aa from central section) derived from <i>Oryza sativa</i> D14 (Os03g0203200).
Form:	Lyophilized
Quantity:	150 µg
Purification:	Serum Peptide affinity form antibody available upon request at info@phytoab.com .
Reconstitution:	Reconstitution with 150 µl of sterile water. "Note: please spin tube briefly prior to opening it to avoid any losses that might occur from lyophilized material adhering to the cap or sides of the tube".
Stability & Storage:	Use a manual defrost freezer and avoid repeated freeze-thaw cycles. 12 months from date of receipt, -20 to -70°C as supplied. 6 months, -20 to -70°C under sterile conditions after reconstitution. 1 month, 2 to 8°C under sterile conditions after reconstitution.
Shipping:	The product is shipped at 4°C. Upon receipt, store it immediately at the temperature recommended above.

Application Information

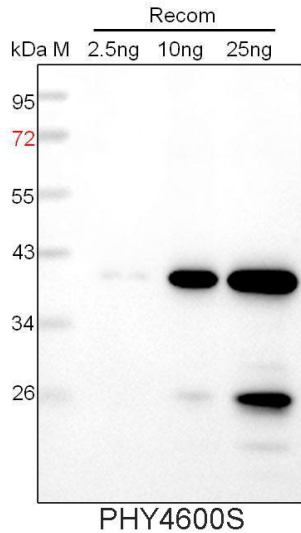
Recommended Dilution:	Western Blot (1:1000-1:2000) Note: Optimal dilutions/concentrations should be determined by the end user.
Expected / apparent MW:	34 kDa

Research Use Only

Predicted Reactivity:

For more species homologues information, please contact tech support at tech@phytoab.com.

Application Example



Recom: 2.5 ng, 10 ng and 25 ng recombinant protein containing the peptide for immunization and having a molecular mass of 40 kDa.

Electrophoresis: 12% SDS-PAGE

Transfer: blotting to NC (nitrocellulose) membrane for 1 h.

Blocking: 5% skim milk at RT or 4°C for 1 h.

Primary antibody: 1:1000 dilution overnight at 4°C.

Secondary antibody: 1:10000 dilution using Goat Anti-Rabbit IgG H&L (HRP) (Cat# PHY6000).

Detection: using chemiluminescence substrate and image were captured with CCD camera.