

Anti-SUMO1 antibody

Catalog: PHY3847A

Product Information

Description:	Rabbit polyclonal antibody
Background:	SUMO1 is a small ubiquitin-like modifier (SUMO) polypeptide that covalently attached to various intracellular protein targets, leading to post-translational modification of those targets.
Synonyms:	SUMO1, ARABIDOPSIS THALIANASMALLUBIQUITIN-LIKE MODIFIER 1, ATSUMO1, SMALLUBIQUITIN-LIKE MODIFIER 1, SUM1, SUMO 1
Immunogen:	KLH-conjugated synthetic peptide (16 aa from C terminal section) derived from <i>Arabidopsis thaliana</i> SUMO1 (AT4G26840).
Form:	Lyophilized
Quantity:	150 µg
Purification:	Immunogen affinity purified
Reconstitution:	Reconstitution with 150 µl of sterile 1×PBS (PH=7.4) containing 30% glycerol. "Note: please spin tube briefly prior to opening it to avoid any losses that might occur from lyophilized material adhering to the cap or sides of the tube".
Stability & Storage:	Use a manual defrost freezer and avoid repeated freeze-thaw cycles. 12 months from date of receipt, -20 to -70°C as supplied. 6 months, -20 to -70°C under sterile conditions after reconstitution. 1 month, 2 to 8°C under sterile conditions after reconstitution.
Shipping:	The product is shipped at 4°C. Upon receipt, store it immediately at the temperature recommended above.

Application Information

Recommended Dilution:	Western Blot (1:1000-1:2000) Note: Optimal dilutions/concentrations should be determined by the end user.
Expected / apparent MW:	11 kDa
Predicted Reactivity:	Among species analyzed, the sequence of the synthetic peptide used for immunization is 100% homologues with the sequence in <i>Brassica napus</i> , <i>Brassica rapa</i> , and 80-99% homologues with the sequence in

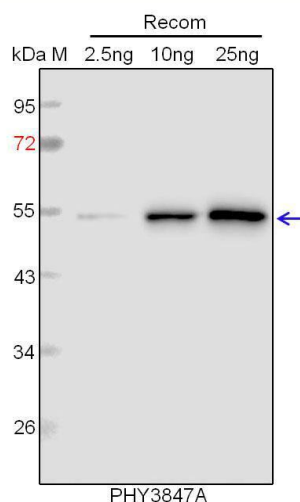
Research Use Only

Glycine max, Triticum aestivum, Medicago truncatula, Cucumis sativus, Solanum tuberosum, Solanum lycopersicum, Spinacia oleracea, Nicotiana tabacum, Populus trichocarpa, Physcomitrium patens, Hordeum vulgare, Vitis vinifera, Zea mays, Gossypium raimondii, Spinacia oleracea, Oryza sativa, Sorghum bicolor, Panicum virgatum, Gossypium raimondii, Setaria viridis.

The sequence of the synthetic peptide used for immunization is 94% (15 / 16) homologues with the sequence in SUMO2 (AT5G55160).

For more species homologues information, please contact tech support at tech@phytoab.com.

Application Example



Recom: 2.5 ng, 10 ng and 25 ng recombinant protein containing the peptide for immunization and having a molecular mass of 54 kDa.

Electrophoresis: 12% SDS-PAGE

Transfer: blotting to NC (nitrocellulose) membrane for 1 h.

Blocking: 5% skim milk at RT or 4°C for 1 h.

Primary antibody: 1:1000 dilution overnight at 4°C.

Secondary antibody: 1:10000 dilution using Goat Anti-Rabbit IgG H&L (HRP) (Cat# PHY6000).

Detection: using chemiluminescence substrate and image were captured with CCD camera.