

# Anti-FKF1/ADO3 antibody

Catalog: PHY7986S

## Product Information

<b>Description:</b>	Rabbit polyclonal antibody
<b>Background:</b>	FKF1 is a blue light receptor and F-box protein in Arabidopsis that regulates photoperiodic flowering. It promotes flowering under long days by degrading the repressor CDF1 to activate CO and FT expression, stabilizing CO protein, and interacting with GI to form a light-sensitive complex. FKF1 also modulates cold stress responses and influences gibberellin signaling by degrading DELLA proteins.
<b>Synonyms:</b>	FKF1, flavin-binding, kelch repeat, f box 1, ADO3
<b>Immunogen:</b>	KLH-conjugated synthetic peptide (16 aa from N terminal section) derived from <i>Arabidopsis thaliana</i> FKF1 (AT1G68050).
<b>Form:</b>	Lyophilized
<b>Quantity:</b>	150 µg
<b>Purification:</b>	Serum Peptide affinity form antibody available upon request at <a href="mailto:info@phytoab.com">info@phytoab.com</a> .
<b>Reconstitution:</b>	Reconstitution with 150 µl of sterile water. "Note: please spin tube briefly prior to opening it to avoid any losses that might occur from lyophilized material adhering to the cap or sides of the tube".
<b>Stability &amp; Storage:</b>	Use a manual defrost freezer and avoid repeated freeze-thaw cycles. 12 months from date of receipt, -20 to -70°C as supplied. 6 months, -20 to -70°C under sterile conditions after reconstitution. 1 month, 2 to 8°C under sterile conditions after reconstitution.
<b>Shipping:</b>	The product is shipped at 4°C. Upon receipt, store it immediately at the temperature recommended above.

## Application Information

<b>Recommended Dilution:</b>	Western Blot (1:1000-1:2000) Note: Optimal dilutions/concentrations should be determined by the end user.
<b>Expected / apparent MW:</b>	69 kDa

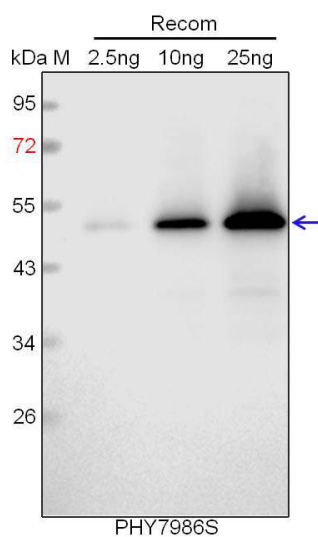
Research Use Only

### Predicted Reactivity:

Among species analyzed, the sequence of the synthetic peptide used for immunization is 100% homologues with the sequence in *Medicago truncatula*, *Cucumis sativus*, *Populus trichocarpa*, *Glycine max*, *Vitis vinifera*, and 94% homologues with the sequence in *Oryza sativa*, *Solanum lycopersicum*, *Nicotiana tabacum*, *Solanum tuberosum*, *Setaria viridis*, *Sorghum bicolor*, *Panicum virgatum*, *Triticum aestivum*, *Zea mays*, *Spinacia oleracea*, *Gossypium raimondii*.

For more species homologues information, please contact tech support at [tech@phytoab.com](mailto:tech@phytoab.com).

### Application Example



Recom: 2.5 ng, 10 ng and 25 ng recombinant protein containing the peptide for immunization and having a molecular mass of 52 kDa.

**Electrophoresis:** 12% SDS-PAGE

**Transfer:** blotting to NC (nitrocellulose) membrane for 1 h.

**Blocking:** 5% skim milk at RT or 4°C for 1 h.

**Primary antibody:** 1:1000 dilution overnight at 4°C.

**Secondary antibody:** 1:10000 dilution using Goat Anti-Rabbit IgG H&L (HRP) (Cat# PHY6000).

**Detection:** using chemiluminescence substrate and image were captured with CCD camera.