

Anti-Phytochrome A antibody

Catalog: PHY1907

Product Information

| | |
|---------------------------------|--|
| Description: | Mouse monoclonal antibody |
| Background: | Phytochromes (PHYs) and cryptochromes (CRYs) are two major classes of photoreceptors which control over similar aspects of plant development such as de-etiolation, plant architecture and flowering. In Arabidopsis, there are five PHY isoforms: A (AT1G09570), B (AT2G18790), C (AT5G35840), D (AT4G16250) and E (AT4G18130). PHYA protein accumulates to a high level in etiolated seedlings and acts primarily as a far-red sensor at the stages of early seedling development. |
| Synonyms: | PHYA, ELONGATED HYPOCOTYL 8, FAR RED ELONGATED 1, FAR RED ELONGATED HYPOCOTYL 2, FHY2, FRE1, HY8, PHYTOCHROME A |
| Immunogen: | Recombinant protein of PHYA (515-1112 aa) derived from <i>Arabidopsis thaliana</i> AT1G09570. |
| Form: | Lyophilized |
| Quantity: | 150 µg |
| Purification: | Protein A purified |
| Reconstitution: | Reconstitution with 150µl of 0.01M sterile PBS. "Note: please spin tube briefly prior to opening it to avoid any losses that might occur from lyophilized material adhering to the cap or sides of the tube". |
| Stability & Storage: | Use a manual defrost freezer and avoid repeated freeze-thaw cycles. 12 months from date of receipt, -20 to -70°C as supplied. 6 months, -20 to -70°C under sterile conditions after reconstitution. 1 month, 2 to 8°C under sterile conditions after reconstitution. |
| Shipping: | The product is shipped at 4°C. Upon receipt, store it immediately at the temperature recommended above. |

Application Information

| | |
|--------------------------------|--|
| Recommended Dilution: | Western Blot (1:1000-1:2000) Note: Optimal dilutions/concentrations should be determined by the end user. |
| Expected / apparent MW: | 125 kDa |

Research Use Only

Confirmed Reactivity:

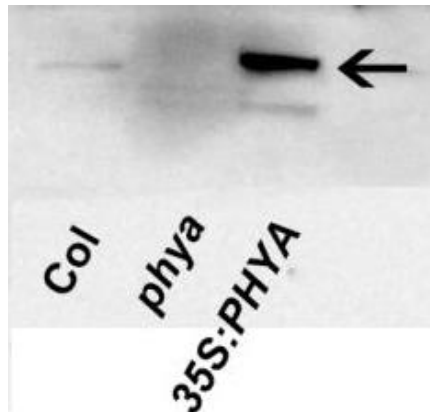
Arabidopsis thaliana

Predicted Reactivity:

For more species homologues information, please contact tech support at tech@phytoab.com.

Application Example

Example1



PHY1907

Electrophoresis: 8% SDS-Urea-PAGE

Transfer: blotting to NC (nitrocellulose) membrane for 1 h.

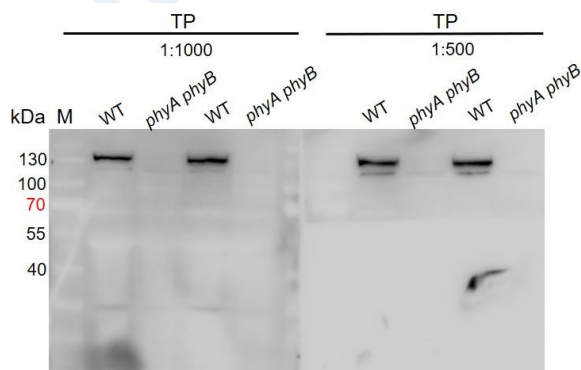
Blocking: 5% skim milk at RT or 4°C for 1 h.

Primary antibody: 1:1000 dilution overnight at 4°C.

Secondary antibody: 1:5000 dilution using Goat Anti-Mouse IgG H&L(HRP) (Cat# PHY6006).

Detection: using chemiluminescence substrate and image were captured with CCD camera.

Example2



PHY1907

TP: 30ug total protein from *Arabidopsis thaliana* leaf.

Electrophoresis: 8% SDS-Urea-PAGE

Transfer: blotting to NC (nitrocellulose) membrane for 1 h.

Blocking: 5% skim milk at RT or 4°C for 1 h.

Primary antibody: 1:1000 \1:500 dilution overnight at 4°C.

Secondary antibody: 1:5000 dilution using Goat Anti-Mouse IgG H&L(HRP) (Cat# PHY6006).

Detection: using chemiluminescence substrate and image were captured with CCD camera.