

Anti-histone H3-like centromeric protein HTR12 isoform X1 antibody

Catalog: PHY6555A

Product Information

Description:	Rabbit polyclonal antibody
Background:	CENH3
Synonyms:	CENH3
Immunogen:	KLH-conjugated synthetic peptide (15 aa from N terminal section) derived from <i>Solanum lycopersicum</i> CENH3 (Solyc01g095650).
Form:	Lyophilized
Quantity:	150 µg
Purification:	Immunogen affinity purified
Reconstitution:	Reconstitution with 150 µl of sterile 1XPBS (PH=7.4). "Note: please spin tube briefly prior to opening it to avoid any losses that might occur from lyophilized material adhering to the cap or sides of the tube".
Stability & Storage:	Use a manual defrost freezer and avoid repeated freeze-thaw cycles. 12 months from date of receipt, -20 to -70°C as supplied. 6 months, -20 to -70°C under sterile conditions after reconstitution. 1 month, 2 to 8°C under sterile conditions after reconstitution.
Shipping:	The product is shipped at 4°C. Upon receipt, store it immediately at the temperature recommended above.

Application Information

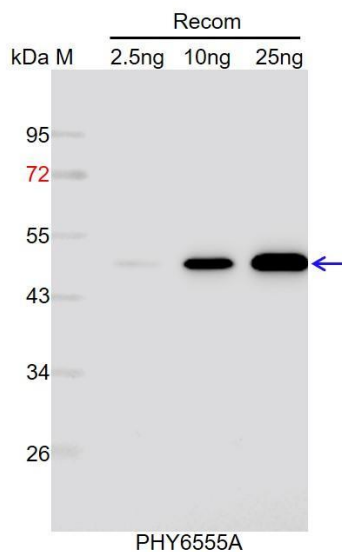
Recommended Dilution:	Western Blot (1:1000-1:2000) Note: Optimal dilutions/concentrations should be determined by the end user.
Expected / apparent MW:	16 kDa
Predicted Reactivity:	Among species analyzed, the sequence of the synthetic peptide used for immunization is 100% homologues with the sequence in <i>Solanum tuberosum</i> (KAH0731350), <i>Solanum verrucosum</i> (WMV11549), <i>Solanum bulbocastanum</i> (KAK6804640), <i>Solanum commersonii</i> (KAG5626605), <i>Solanum stenotomum</i>

Research Use Only

(XP_049386553), *Solanum pinnatisectum* (KAK4738891),
Solanum stoloniferum (KAL3349185), *Solanum pennellii*
 (XP_015067490), *Solanum chilense* (TMW91726), and 93%
 homologues with the sequence in *Solanum dulcamara*.

For more species homologues information, please contact tech
 support at tech@phytoab.com.

Application Example



Recom: 2.5 ng, 10 ng and 25 ng recombinant protein containing the
 peptide for immunization and having a molecular mass of 47 kDa.

Electrophoresis: 12% SDS-PAGE

Transfer: blotting to NC (nitrocellulose) membrane for 1 h.

Blocking: 5% skim milk at RT or 4°C for 1 h.

Primary antibody: 1:1000 dilution overnight at 4°C.

Secondary antibody: 1:10000 dilution using Goat Anti-Rabbit IgG H&L
 (HRP) (Cat# PHY6000).

Detection: using chemiluminescence substrate and image were
 captured with CCD camera.