

Anti-Centromeric histone 3, N-terminal antibody

Catalog: PHY6558A

Product Information

Description:	Rabbit polyclonal antibody
Background:	CENH3
Synonyms:	CENH3
Immunogen:	KLH-conjugated synthetic peptide (15 aa from N terminal section) derived from <i>Triticum aestivum</i> CENH3 (TraesCS1A03G0761600, TraesCS1B03G0870200 and TraesCS1D03G0729200 / TraesCS1D02G306100).
Form:	Lyophilized
Quantity:	150 µg
Purification:	Immunogen affinity purified
Reconstitution:	Reconstitution with 150 µl of sterile 1XPBS (PH=7.4). "Note: please spin tube briefly prior to opening it to avoid any losses that might occur from lyophilized material adhering to the cap or sides of the tube".
Stability & Storage:	Use a manual defrost freezer and avoid repeated freeze-thaw cycles. 12 months from date of receipt, -20 to -70°C as supplied. 6 months, -20 to -70°C under sterile conditions after reconstitution. 1 month, 2 to 8°C under sterile conditions after reconstitution.
Shipping:	The product is shipped at 4°C. Upon receipt, store it immediately at the temperature recommended above.

Application Information

Recommended Dilution:	Western Blot (1:1000-1:2000), ChIP-Seq Note: Optimal dilutions/concentrations should be determined by the end user.
Expected / apparent MW:	18 kDa
Predicted Reactivity:	Among species analyzed, the sequence of the synthetic peptide used for immunization is 100% homologues with the sequence in <i>Aegilops tauschii</i> (AKM28569), <i>Triticum dicoccoides</i> (XP_037419560), and 80-99% homologues with the sequence in <i>Hordeum vulgare</i> , <i>Hordeum bulbosum</i> , <i>Secale strictum</i> ,

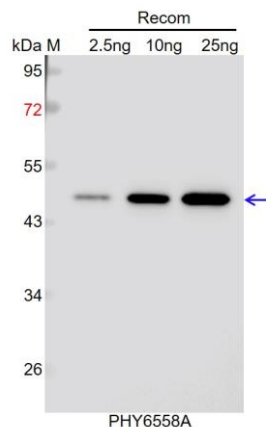
Research Use Only

Aegilops speltoides, Secale cereale, Hordeum marinum, Oryza sativa, Panicum virgatum.

For more species homologues information, please contact tech support at tech@phytoab.com.

Application Example

Example1



Recom: 2.5 ng, 10 ng and 25 ng recombinant protein containing the peptide for immunization and having a molecular mass of 47 kDa.

Electrophoresis: 12% SDS-PAGE

Transfer: blotting to NC (nitrocellulose) membrane for 1 h.

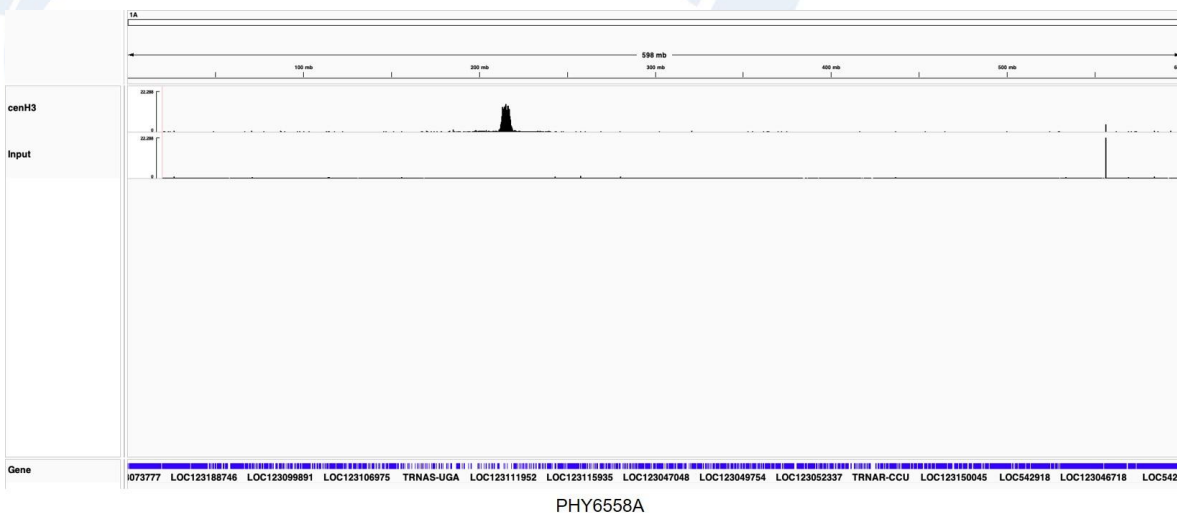
Blocking: 5% skim milk at RT or 4°C for 1 h.

Primary antibody: 1:1000 dilution overnight at 4°C.

Secondary antibody: 1:10000 dilution using Goat Anti-Rabbit IgG H&L (HRP) (Cat# PHY6000).

Detection: using chemiluminescence substrate and image were captured with CCD camera.

Example2



Anti-CENH3 Antibody tested by Chip-seq. Chromatin was prepared from *Triticum aestivum*. 1.5 g of the wheat seedlings were fixed in 1% formaldehyde for 20 minutes, followed by the addition of 100 mmol/L glycine to terminate the fixation reaction. The supernatant was incubated with 7 µl of a CENH3 antibody. Immunocomplexes were captured for two hours at 4 °C.