

Anti-Psb28 protein, C-terminal antibody

Catalog: PHY3490A

Product Information

Description:	Rabbit polyclonal antibody
Background:	Psb28 is a chloroplast protein located on the stroma side of thylakoid membrane. It is widely present in the photosynthetic organisms and involved in the assembly of CP47 subunits during PSII biogenesis.
Synonyms:	Psb28, PHOTOSYSTEM II REACTION CENTER PSB28 PROTEIN
Immunogen:	KLH-conjugated synthetic peptide (15 aa from C terminal section) derived from <i>Arabidopsis thaliana</i> Psb28 (AT4G28660).
Form:	Lyophilized
Quantity:	150 µg
Purification:	Immunogen affinity purified
Reconstitution:	Reconstitution with 150 µl of sterile water. "Note: please spin tube briefly prior to opening it to avoid any losses that might occur from lyophilized material adhering to the cap or sides of the tube".
Stability & Storage:	Use a manual defrost freezer and avoid repeated freeze-thaw cycles. 12 months from date of receipt, -20 to -70°C as supplied. 6 months, -20 to -70°C under sterile conditions after reconstitution. 1 month, 2 to 8°C under sterile conditions after reconstitution.
Shipping:	The product is shipped at 4°C. Upon receipt, store it immediately at the temperature recommended above.

Application Information

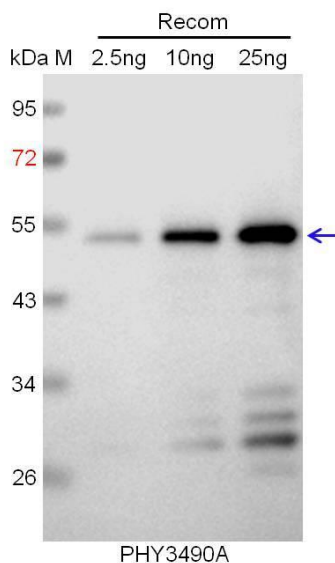
Recommended Dilution:	Western Blot (1:1000-1:2000) Note: Optimal dilutions/concentrations should be determined by the end user.
Expected / apparent MW:	15 kDa
Predicted Reactivity:	Among analyzed species, the sequence of the synthetic peptide used for immunization is 100% homologues with the sequence in <i>Brassica rapa</i> , <i>Brassica napus</i> , and 80-99% homologues with the sequence in <i>Vitis vinifera</i> , <i>Cucumis sativus</i> , <i>Gossypium raimondii</i> , <i>Oryza sativa</i> ,

Research Use Only

Glycine max, Zea mays, Spinacia oleracea, Triticum aestivum, Panicum virgatum, Hordeum vulgare, Medicago truncatula, Populus trichocarpa, Sorghum bicolor, Nicotiana tabacum, Setaria viridis, Solanum tuberosum, Solanum lycopersicum, Physcomitrium patens, Synechocystis sp. PCC 6803, Synechococcus elongatus.

For more species homologues information, please contact tech support at tech@phytoab.com.

Application Example



Recom: 2.5 ng, 10 ng and 25 ng recombinant protein containing the peptide for immunization and having a molecular mass of 53 kDa.

Electrophoresis: 12% SDS-PAGE

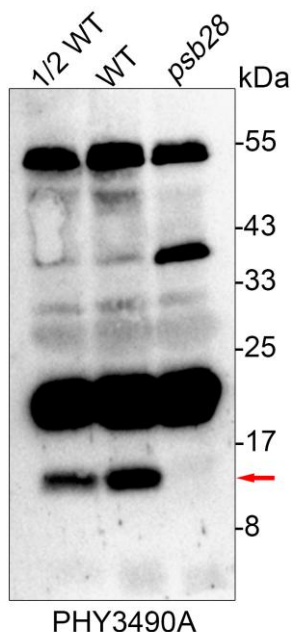
Transfer: blotting to NC (nitrocellulose) membrane for 1 h.

Blocking: 5% skim milk at RT or 4°C for 1 h.

Primary antibody: 1:1000 dilution overnight at 4°C.

Secondary antibody: 1:10000 dilution using Goat Anti-Rabbit IgG H&L (HRP) (Cat# PHY6000).

Detection: using chemiluminescence substrate and image were captured with CCD camera.



50ug and 100ug WT thylakoids and 100ug *psb28* mutant thylakoids were used for immunoblotting.

Electrophoresis: 12.5% SDS-PAGE

Transfer: blotting to NC (nitrocellulose) membrane for 1 h.

Blocking: 5% skim milk at RT or 4°C for 1 h.

Primary antibody: 1:1000 dilution overnight at 4°C.

Secondary antibody: 1:10000 dilution using Goat Anti-Rabbit IgG H&L (HRP) (Cat# PHY6000).

Detection: using chemiluminescence substrate and image were captured with CCD camera.