

Anti-OSCA1.1/1.2, C-terminal antibody

Catalog: PHY7634A

Product Information

Description:	Rabbit polyclonal antibody
Background:	OSCA1.1 (AT4G04340) and OSCA1.2 (AT4G22120) are hyperosmolality-gated calcium-permeable channels in <i>Arabidopsis thaliana</i> . They function as osmosensors, initiating calcium influx in response to osmotic stress (e.g., drought), thereby triggering downstream stress signaling and adaptive responses like stomatal closure.
Synonyms:	OSCA1.1/1.2, REDUCED HYPEROSMOLALITY-INDUCED CA ²⁺ INCREASE 1.1 / 1.2
Immunogen:	KLH-conjugated synthetic peptide (15 aa from C terminal section) derived from <i>Arabidopsis thaliana</i> OSCA1.1 (AT4G04340) and OSCA1.2 (AT4G22120).
Form:	Lyophilized
Quantity:	150 µg
Purification:	Immunogen affinity purified
Reconstitution:	Reconstitution with 150 µl of sterile 1XPBS (PH=7.4) containing 30% glycerol. "Note: please spin tube briefly prior to opening it to avoid any losses that might occur from lyophilized material adhering to the cap or sides of the tube".
Stability & Storage:	Use a manual defrost freezer and avoid repeated freeze-thaw cycles. 12 months from date of receipt, -20 to -70°C as supplied. 6 months, -20 to -70°C under sterile conditions after reconstitution. 1 month, 2 to 8°C under sterile conditions after reconstitution.
Shipping:	The product is shipped at 4°C. Upon receipt, store it immediately at the temperature recommended above.

Application Information

Recommended Dilution:	Western Blot (1:1000-1:2000) Note: Optimal dilutions/concentrations should be determined by the end user.
Expected / apparent MW:	88 kDa
Predicted Reactivity:	Among species analyzed, the sequence of the synthetic peptide used

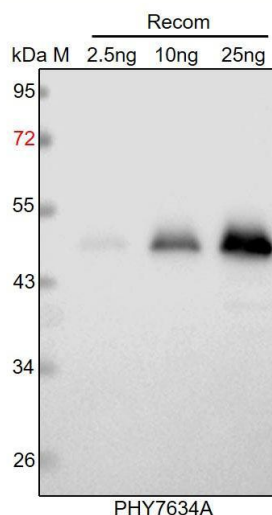
Research Use Only

for immunization is 100% homologues with the sequence in *Brassica napus*, *Brassica rapa*, *Populus trichocarpa*, and 80-99% homologues with the sequence in *Gossypium raimondii*, *Oryza sativa*, *Glycine max*, *Vitis vinifera*, *Spinacia oleracea*, *Nicotiana tabacum*, *Zea mays*, *Panicum virgatum*, *Hordeum vulgare*, *Sorghum bicolor*, *Triticum aestivum*, *Setaria viridis*.

The sequence of the synthetic peptide used for immunization is 87% (13/15) homologues with the sequence in OSCA1.3 (AT1G11960).

For more species homologues information, please contact tech support at tech@phytoab.com.

Application Example



Recom: 2.5 ng, 10 ng and 25 ng recombinant protein containing the peptide for immunization and having a molecular mass of 50 kDa.

Electrophoresis: 12% SDS-PAGE

Transfer: blotting to NC (nitrocellulose) membrane for 1 h.

Blocking: 5% skim milk at RT or 4°C for 1 h.

Primary antibody: 1:1000 dilution overnight at 4°C.

Secondary antibody: 1:10000 dilution using Goat Anti-Rabbit IgG H&L (HRP) (Cat# PHY6000).

Detection: using chemiluminescence substrate and image were captured with CCD camera.