

# Anti-ASY1 antibody

Catalog: PHY1170A

## Product Information

<b>Description:</b>	Rabbit polyclonal antibody
<b>Background:</b>	ASY1 is a meiosis-specific axial element protein. It promotes homologous chromosome pairing, synapsis, and crossover formation by facilitating DNA double-strand break repair. Mutations in ASY1 lead to defective chromosome synapsis and sterility.
<b>Synonyms:</b>	ASY1, ASYNAPTIC 1, ATASY1
<b>Immunogen:</b>	KLH-conjugated synthetic peptide (15 aa from N terminal section) derived from <i>Arabidopsis thaliana</i> ASY1 (AT1G67370).
<b>Form:</b>	Lyophilized
<b>Quantity:</b>	150 µg
<b>Purification:</b>	Immunogen affinity purified
<b>Reconstitution:</b>	Reconstitution with 150 µl of sterile 1XPBS (PH=7.4) containing 30% glycerol. "Note: please spin tube briefly prior to opening it to avoid any losses that might occur from lyophilized material adhering to the cap or sides of the tube".
<b>Stability &amp; Storage:</b>	Use a manual defrost freezer and avoid repeated freeze-thaw cycles. 12 months from date of receipt, -20 to -70°C as supplied. 6 months, -20 to -70°C under sterile conditions after reconstitution. 1 month, 2 to 8°C under sterile conditions after reconstitution.
<b>Shipping:</b>	The product is shipped at 4°C. Upon receipt, store it immediately at the temperature recommended above.

## Application Information

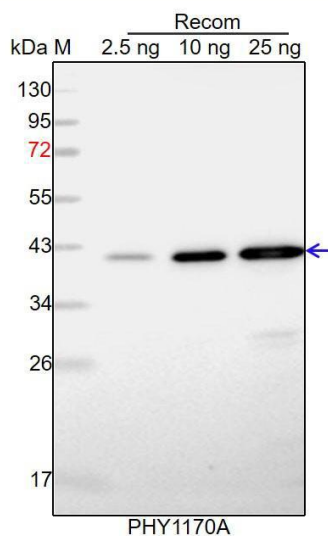
<b>Recommended Dilution:</b>	Western Blot (1:1000-1:2000) Note: Optimal dilutions/concentrations should be determined by the end user.
<b>Expected / apparent MW:</b>	67 kDa
<b>Predicted Reactivity:</b>	Among species analyzed, the sequence of the synthetic peptide used for immunization is 100% homologues with the sequence in <i>Cucumis sativus</i> , and 80-99% homologues with the sequence in <i>Solanum</i>

Research Use Only

*tuberosum, Spinacia oleracea, Nicotiana tabacum, Gossypium raimondii, Solanum lycopersicum, Glycine max, Brassica napus, Brassica rapa, Medicago truncatula, Vitis vinifera, Populus trichocarpa, Triticum aestivum, Hordeum vulgare, Oryza sativa, Panicum virgatum, Setaria viridis, Sorghum bicolor, Zea mays, Sorghum bicolor.*

For more species homologues information, please contact tech support at [tech@phytoab.com](mailto:tech@phytoab.com).

### Application Example



Recom: 2.5 ng, 10 ng and 25 ng recombinant protein containing the peptide for immunization and having a molecular mass of 42 kDa.

**Electrophoresis:** 12% SDS-PAGE

**Transfer:** blotting to NC (nitrocellulose) membrane for 1 h.

**Blocking:** 5% skim milk at RT or 4°C for 1 h.

**Primary antibody:** 1:1000 dilution overnight at 4°C.

**Secondary antibody:** 1:10000 dilution using Goat Anti-Rabbit IgG H&L (HRP) (Cat# PHY6000).

**Detection:** using chemiluminescence substrate and image were captured with CCD camera.