

Anti-PSI subunit PsaE, C-terminal antibody

Catalog: PHY7898A

Product Information

| | |
|---------------------------------|---|
| Description: | Rabbit polyclonal antibody |
| Background: | PSAE is the Photosystem I subunit E. It stabilizes the PSI complex and facilitates efficient electron transfer from plastocyanin to ferredoxin, which is essential for linear and cyclic electron flow during photosynthesis. |
| Synonyms: | PsaE-1/2, PSAE-1/2 |
| Immunogen: | KLH-conjugated synthetic peptide (13 aa from C terminal section) derived from <i>Arabidopsis thaliana</i> PsaE-1 (AT4G28750) and PsaE-2 (AT2G20260). |
| Form: | Lyophilized |
| Quantity: | 150 µg |
| Purification: | Immunogen affinity purified |
| Reconstitution: | Reconstitution with 150 µl of sterile 1XPBS (PH=7.4) containing 30% glycerol. "Note: please spin tube briefly prior to opening it to avoid any losses that might occur from lyophilized material adhering to the cap or sides of the tube". |
| Stability & Storage: | Use a manual defrost freezer and avoid repeated freeze-thaw cycles. 12 months from date of receipt, -20 to -70°C as supplied. 6 months, -20 to -70°C under sterile conditions after reconstitution. 1 month, 2 to 8°C under sterile conditions after reconstitution. |
| Shipping: | The product is shipped at 4°C. Upon receipt, store it immediately at the temperature recommended above. |

Application Information

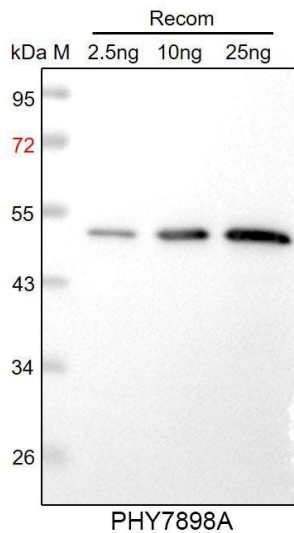
| | |
|--------------------------------|---|
| Recommended Dilution: | Western Blot (1:1000-1:2000) Note: Optimal dilutions/concentrations should be determined by the end user. |
| Expected / apparent MW: | 15 kDa |
| Predicted Reactivity: | Among species analyzed, the sequence of the synthetic peptide used for immunization is 100% homologues with the sequence in <i>Nicotiana tabacum</i> , <i>Solanum tuberosum</i> , <i>Solanum lycopersicum</i> , and 80-99% homologues with the sequence in <i>Gossypium raimondii</i> , <i>Medicago</i> |

Research Use Only

truncatula, *Brassica rapa*, *Brassica napus*, *Populus trichocarpa*, *Cucumis sativus*, *Sorghum bicolor*, *Panicum virgatum*, *Setaria viridis*, *Oryza sativa*, *Vitis vinifera*, *Zea mays*, *Spinacia oleracea*, *Triticum aestivum*, *Glycine max*, *Hordeum vulgare*.

For more species homologues information, please contact tech support at tech@phytoab.com.

Application Example



Recom: 2.5 ng, 10 ng and 25 ng recombinant protein containing the peptide for immunization and having a molecular mass of 52 kDa.

Electrophoresis: 12% SDS-PAGE

Transfer: blotting to NC (nitrocellulose) membrane for 1 h.

Blocking: 5% skim milk at RT or 4°C for 1 h.

Primary antibody: 1:1000 dilution overnight at 4°C.

Secondary antibody: 1:10000 dilution using Goat Anti-Rabbit IgG H&L (HRP) (Cat# PHY6000).

Detection: using chemiluminescence substrate and image were captured with CCD camera.