

Anti-PBA1 antibody

Catalog: PHY2474A

Product Information

Description:	Rabbit polyclonal antibody
Background:	PBA1 is a beta subunit of the 20S proteasome. This multicatalytic proteinase complex cleaves peptides at sites adjacent to residues like Arg, Phe, Tyr, Leu, and Glu under neutral or slightly basic pH conditions, playing a crucial role in targeted protein degradation.
Synonyms:	PBA1
Immunogen:	KLH-conjugated synthetic peptide (19 aa from N terminal section) derived from <i>Arabidopsis thaliana</i> PBA1 (AT4G31300).
Form:	Lyophilized
Quantity:	150 µg
Purification:	Immunogen affinity purified
Reconstitution:	Reconstitution with 150 µl of sterile 1XPBS (PH=7.4) containing 30% glycerol. "Note: please spin tube briefly prior to opening it to avoid any losses that might occur from lyophilized material adhering to the cap or sides of the tube".
Stability & Storage:	Use a manual defrost freezer and avoid repeated freeze-thaw cycles. 12 months from date of receipt, -20 to -70°C as supplied. 6 months, -20 to -70°C under sterile conditions after reconstitution. 1 month, 2 to 8°C under sterile conditions after reconstitution.
Shipping:	The product is shipped at 4°C. Upon receipt, store it immediately at the temperature recommended above.

Application Information

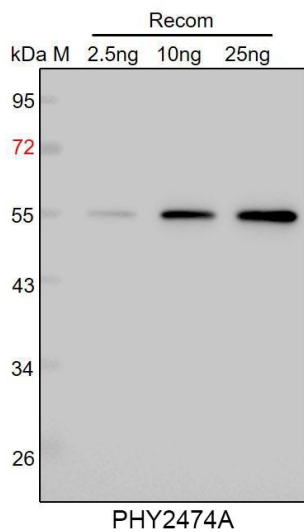
Recommended Dilution:	Western Blot (1:1000-1:2000) Note: Optimal dilutions/concentrations should be determined by the end user.
Expected / apparent MW:	25 kDa
Predicted Reactivity:	Among species analyzed, the sequence of the synthetic peptide used for immunization is 100% homologues with the sequence in <i>Zea mays</i> , <i>Solanum tuberosum</i> , <i>Panicum virgatum</i> , <i>Sorghum bicolor</i> , <i>Setaria</i>

Research Use Only

viridis, *Vitis vinifera*, *Nicotiana tabacum*, *Solanum lycopersicum*, *Gossypium raimondii*, *Brassica rapa*, *Brassica napus*, and 80-99% homologues with the sequence in *Triticum aestivum*, *Oryza sativa*, *Hordeum vulgare*, *Spinacia oleracea*, *Populus trichocarpa*, *Cucumis sativus*, *Glycine max*, *Medicago truncatula*.

For more species homologues information, please contact tech support at tech@phytoab.com.

Application Example



Recom: 2.5 ng, 10 ng and 25 ng recombinant protein containing the peptide for immunization and having a molecular mass of 55 kDa.

Electrophoresis: 12% SDS-PAGE

Transfer: blotting to NC (nitrocellulose) membrane for 1 h.

Blocking: 5% skim milk at RT or 4°C for 1 h.

Primary antibody: 1:1000 dilution overnight at 4°C.

Secondary antibody: 1:10000 dilution using Goat Anti-Rabbit IgG H&L (HRP) (Cat# PHY6000).

Detection: using chemiluminescence substrate and image were captured with CCD camera.