

# Anti-LSP1 antibody

Catalog: PHY3687A

## Product Information

<b>Description:</b>	Rabbit polyclonal antibody
<b>Background:</b>	LSP1 is a leucine-rich repeat (LRR) protein. It is involved in plant immune responses and is expressed in response to pathogen-associated molecular patterns (PAMPs). This protein likely functions in signal transduction pathways during the early stages of defense activation.
<b>Synonyms:</b>	LSP1, EIF(ISO)4E, EIF4E2, EIFISO4E, EUKARYOTIC INITIATION FACTOR (ISO)4E, EUKARYOTIC TRANSLATION INITIATION FACTOR 4E2, EUKARYOTIC TRANSLATION INITIATION FACTOR ISOFORM 4E, LOSS OF SUSCEPTIBILITY TO POTYVIRUS 1
<b>Immunogen:</b>	KLH-conjugated synthetic peptide (15aa from C terminal section) derived from <i>Arabidopsis thaliana</i> LSP1 (AT5G35620).
<b>Form:</b>	Lyophilized
<b>Quantity:</b>	150 µg
<b>Purification:</b>	Immunogen affinity purified
<b>Reconstitution:</b>	Reconstitution with 150 µl of sterile 1XPBS (PH=7.4) containing 30% glycerol. "Note: please spin tube briefly prior to opening it to avoid any losses that might occur from lyophilized material adhering to the cap or sides of the tube".
<b>Stability &amp; Storage:</b>	Use a manual defrost freezer and avoid repeated freeze-thaw cycles. 12 months from date of receipt, -20 to -70°C as supplied. 6 months, -20 to -70°C under sterile conditions after reconstitution. 1 month, 2 to 8°C under sterile conditions after reconstitution.
<b>Shipping:</b>	The product is shipped at 4°C. Upon receipt, store it immediately at the temperature recommended above.

## Application Information

<b>Recommended Dilution:</b>	Western Blot (1:1000-1:2000) Note: Optimal dilutions/concentrations should be determined by the end user.
<b>Expected / apparent MW:</b>	23kDa

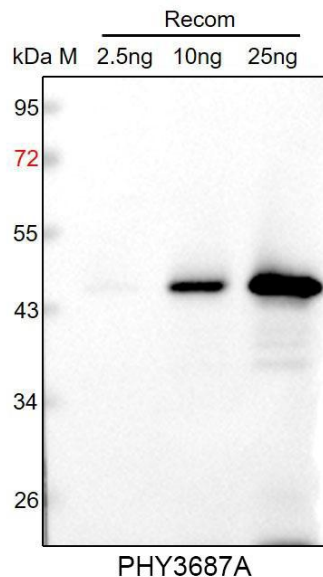
Research Use Only

## Predicted Reactivity:

Among species analyzed, the sequence of the synthetic peptide used for immunization is 80-99% homologues with the sequence in *Brassica napus*, *Brassica rapa*.

For more species homologues information, please contact tech support at [tech@phytoab.com](mailto:tech@phytoab.com).

## Application Example



Recom: 2.5 ng, 10 ng and 25 ng recombinant protein containing the peptide for immunization and having a molecular mass of 45 kDa.

**Electrophoresis:** 12% SDS-PAGE

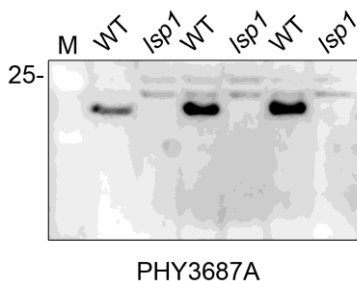
**Transfer:** blotting to NC (nitrocellulose) membrane for 1 h.

**Blocking:** 5% skim milk at RT or 4°C for 1 h.

**Primary antibody:** 1:1000 dilution overnight at 4°C.

**Secondary antibody:** 1:10000 dilution using Goat Anti-Rabbit IgG H&L (HRP) (Cat# PHY6000).

**Detection:** using chemiluminescence substrate and image were captured with CCD camera.



Total protein isolated from WT and *lsp1* mutant seedlings were used for immunoblot analysis.

(Data is kindly provided by Dr. Xueqin Li and Prof. Heng Zhang in Shanghai Jiaotong University).