

Anti-TBP1/2 antibody

Catalog: PHY7998S

Product Information

Description:	Rabbit polyclonal antibody
Background:	TBP1/2 are TATA-box binding proteins in <i>Arabidopsis thaliana</i> . They function as general transcription factors, forming the core of the TFIID complex to initiate RNA polymerase II-dependent transcription by recognizing and binding promoter sequences. These proteins are essential for recruiting the pre-initiation complex and play a fundamental role in regulating the expression of a wide range of genes.
Synonyms:	TBP1; TATA BINDING PROTEIN 1; TFIID-1; TRANSCRIPTION FACTOR IID-1; TBP2; TATA BINDING PROTEIN 2.
Immunogen:	KLH-conjugated synthetic peptide (13 aa from central section) derived from <i>Arabidopsis thaliana</i> TBP1/2 (AT3G13445/AT1G55520).
Form:	Lyophilized
Quantity:	150 µg
Purification:	Serum Peptide affinity form antibody available upon request at info@phytoab.com .
Reconstitution:	Reconstitution with 150 µl of sterile water. "Note: please spin tube briefly prior to opening it to avoid any losses that might occur from lyophilized material adhering to the cap or sides of the tube".
Stability & Storage:	Use a manual defrost freezer and avoid repeated freeze-thaw cycles. 12 months from date of receipt, -20 to -70°C as supplied. 6 months, -20 to -70°C under sterile conditions after reconstitution. 1 month, 2 to 8°C under sterile conditions after reconstitution.
Shipping:	The product is shipped at 4°C. Upon receipt, store it immediately at the temperature recommended above.

Application Information

Recommended Dilution:	Western Blot (1:1000-1:2000) Note: Optimal dilutions/concentrations should be determined by the end user.
------------------------------	--

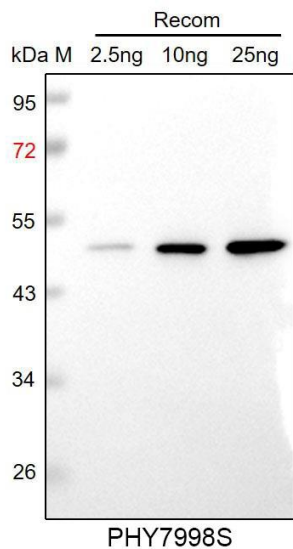
Research Use Only

Expected / apparent MW: 22 kDa

Predicted Reactivity: Among species analyzed, the sequence of the synthetic peptide used for immunization is 100% homologues with the sequence in *Brassica rapa*, *Brassica napus*, *Solanum tuberosum*, *Zea mays*, *Triticum aestivum*, *Hordeum vulgare*, *Glycine max*, *Medicago truncatula*, *Vitis vinifera*, *Oryza sativa*, *Panicum virgatum*, *Gossypium raimondii*, *Sorghum bicolor*, *Nicotiana tabacum*, *Spinacia oleracea*, *Cucumis sativus*, *Setaria viridis*, *Solanum lycopersicum*.

For more species homologues information, please contact tech support at tech@phytoab.com.

Application Example



Recom: 2.5 ng, 10 ng and 25 ng recombinant protein containing the peptide for immunization and having a molecular mass of 50 kDa.

Electrophoresis: 12% SDS-PAGE

Transfer: blotting to NC (nitrocellulose) membrane for 1 h.

Blocking: 5% skim milk at RT or 4°C for 1 h.

Primary antibody: 1:1000 dilution overnight at 4°C.

Secondary antibody: 1:10000 dilution using Goat Anti-Rabbit IgG H&L (HRP) (Cat# PHY6000).

Detection: using chemiluminescence substrate and image were captured with CCD camera.