

Anti-OsPEPC antibody

Catalog: PHY4649S

Product Information

Description:	Rabbit polyclonal antibody
Background:	OsPEPC refers to phosphoenolpyruvate carboxylase in rice, a key enzyme catalyzing oxaloacetate production for nitrogen assimilation and amino acid synthesis. Rice possesses both cytosolic and unique chloroplastic isozymes. The chloroplastic OsPPC4 is crucial for growth with ammonium as the nitrogen source, especially in waterlogged soils, while other isozymes like OsPPC1 and OsPPC3 support seed development and storage compound accumulation.
Synonyms:	PEPC
Immunogen:	KLH-conjugated synthetic peptide (16 aa from C-terminal section) derived from <i>Oryza sativa</i> OsPEPC (Os02g0244700, Os08g0366000, Os09g0315700, Os01g0758300, Os01g0208700).
Form:	Lyophilized
Quantity:	150 µg
Purification:	Serum Peptide affinity form antibody available upon request at info@phytoab.com .
Reconstitution:	Reconstitution with 150 µl of sterile water. "Note: please spin tube briefly prior to opening it to avoid any losses that might occur from lyophilized material adhering to the cap or sides of the tube".
Stability & Storage:	Use a manual defrost freezer and avoid repeated freeze-thaw cycles. 12 months from date of receipt, -20 to -70°C as supplied. 6 months, -20 to -70°C under sterile conditions after reconstitution. 1 month, 2 to 8°C under sterile conditions after reconstitution.
Shipping:	The product is shipped at 4°C. Upon receipt, store it immediately at the temperature recommended above.

Application Information

Recommended Dilution:	Western Blot (1:1000-1:2000) Note: Optimal dilutions/concentrations should be determined by the end user.
------------------------------	--

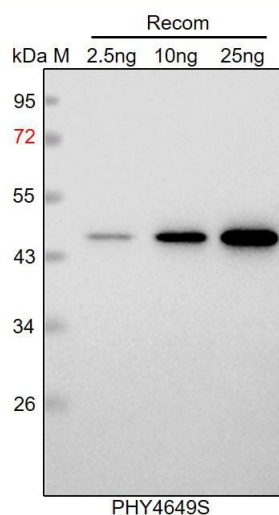
Research Use Only

Expected / apparent MW: 108 kDa

Predicted Reactivity: Among species analyzed, the sequence of the synthetic peptide used for immunization is 100% homologues with the sequence in *Arabidopsis thaliana*, *Panicum virgatum*, *Hordeum vulgare*, *Glycine max*, *Triticum aestivum*, *Zea mays*, *Brassica napus*, *Brassica rapa*, *Physcomitrium patens*, *Gossypium raimondii*, *Populus trichocarpa*, *Sorghum bicolor*, *Setaria viridis*, *Nicotiana tabacum*, *Medicago truncatula*, *Solanum tuberosum*, *Cucumis sativus*, *Solanum lycopersicum*, *Vitis vinifera*, and 93% homologues with the sequence in *Spinacia oleracea*.

For more species homologues information, please contact tech support at tech@phytoab.com.

Application Example



Recom: 2.5 ng, 10 ng and 25 ng recombinant protein containing the peptide for immunization and having a molecular mass of 46 kDa.

Electrophoresis: 12% SDS-PAGE

Transfer: blotting to NC (nitrocellulose) membrane for 1 h.

Blocking: 5% skim milk at RT or 4°C for 1 h.

Primary antibody: 1:1000 dilution overnight at 4°C.

Secondary antibody: 1:10000 dilution using Goat Anti-Rabbit IgG H&L (HRP) (Cat# PHY6000).

Detection: using chemiluminescence substrate and image were captured with CCD camera.