

Anti-HDA15 antibody

Catalog: PHY1688

Product Information

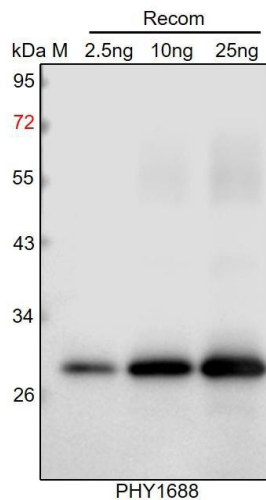
Description:	Rabbit polyclonal antibody
Background:	HDA15 is a class II histone deacetylase. It represses gene expression by removing acetyl groups from core histones. This enzyme forms tetramers, and its activity is regulated by phosphorylation, which influences its oligomerization and subnuclear localization. HDA15 is involved in photomorphogenesis, photosynthesis regulation, and stress responses
Synonyms:	HDA15, ATHDA15, HISTONE DEACETYLASE 15
Immunogen:	Recombinant whole length of HDA15 protein from <i>Arabidopsis thaliana</i> (AT3G18520).
Form:	Lyophilized
Quantity:	150 µg
Purification:	Protein A purified
Reconstitution:	Reconstitution with 150 µl of sterile 1×PBS (PH=7.4) containing 30% glycerol. "Note: please spin tube briefly prior to opening it to avoid any losses that might occur from lyophilized material adhering to the cap or sides of the tube".
Stability & Storage:	Use a manual defrost freezer and avoid repeated freeze-thaw cycles. 12 months from date of receipt, -20 to -70°C as supplied. 6 months, -20 to -70°C under sterile conditions after reconstitution. 1 month, 2 to 8°C under sterile conditions after reconstitution.
Shipping:	The product is shipped at 4°C. Upon receipt, store it immediately at the temperature recommended above.

Application Information

Recommended Dilution:	Western Blot (1:1000-1:2000) Note: Optimal dilutions/concentrations should be determined by the end user.
Expected / apparent MW:	61 kDa
Predicted Reactivity:	For more species homologues information, please contact tech support at tech@phytoab.com .

Research Use Only

Application Example



2.5 ng, 10 ng and 25 ng recombinant HDA15 (AA 1-171) protein for immunization and having a molecular mass of 28 kDa.

Electrophoresis: 12 SDS-PAGE

Transfer: blotting to NC (nitrocellulose) membrane for 1 h.

Blocking: 5% skim milk at RT or 4°C for 1 h.

Primary antibody: 1:1000 dilution overnight at 4°C.

Secondary antibody: 1:10000 dilution using Goat Anti-Rabbit IgG H&L (HRP) (Cat# PHY6000).

Detection: using chemiluminescence substrate and image were captured with CCD camera.