

# Anti-OsD3/SOL1/ORE9/MAX2 antibody

Catalog: PHY4629S

## Product Information

<b>Description:</b>	Rabbit polyclonal antibody
<b>Background:</b>	OsD3 is an F-box protein in rice that acts as a core component of the SCF ubiquitin ligase complex. It mediates strigolactone hormone signaling by facilitating the ubiquitination and degradation of the transcriptional repressor D53, thereby regulating key agronomic traits such as tillering and plant height. Mutations in this gene result in a dwarf phenotype with excessive tillers.
<b>Synonyms:</b>	D3, SOL1, d3, dwf3, D3/OsMAX2, Os_F0760, OsORE9, ORE9, MAX2, OsRFPH2-10, RFPH2-10, OsD3, OsFBL27, FBL27
<b>Immunogen:</b>	KLH-conjugated synthetic peptide (16 aa from central section) derived from <i>Oryza sativa</i> OsD3 (Os06g0154200).
<b>Form:</b>	Lyophilized
<b>Quantity:</b>	150 µg
<b>Purification:</b>	Serum Peptide affinity form antibody available upon request at <a href="mailto:info@phytoab.com">info@phytoab.com</a> .
<b>Reconstitution:</b>	Reconstitution with 150 µl of sterile water. "Note: please spin tube briefly prior to opening it to avoid any losses that might occur from lyophilized material adhering to the cap or sides of the tube".
<b>Stability &amp; Storage:</b>	Use a manual defrost freezer and avoid repeated freeze-thaw cycles. 12 months from date of receipt, -20 to -70°C as supplied. 6 months, -20 to -70°C under sterile conditions after reconstitution. 1 month, 2 to 8°C under sterile conditions after reconstitution.
<b>Shipping:</b>	The product is shipped at 4°C. Upon receipt, store it immediately at the temperature recommended above.

## Application Information

<b>Recommended Dilution:</b>	Western Blot (1:1000-1:2000) Note: Optimal dilutions/concentrations should be determined by the end user.
<b>Expected / apparent MW:</b>	79 kDa

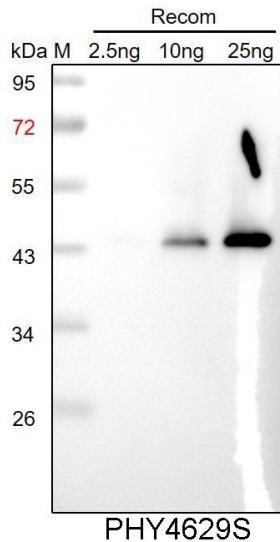
Research Use Only

### Predicted Reactivity:

Among species analyzed, the sequence of the synthetic peptide used for immunization is 80-99% homologues with the sequence in *Setaria viridis*, *Zea mays*, *Panicum virgatum*.

For more species homologues information, please contact tech support at [tech@phytoab.com](mailto:tech@phytoab.com).

### Application Example



Recom: 2.5 ng, 10 ng and 25 ng recombinant protein containing the peptide for immunization and having a molecular mass of 44 kDa.

**Electrophoresis:** 12% SDS-PAGE

**Transfer:** blotting to NC (nitrocellulose) membrane for 1 h.

**Blocking:** 5% skim milk at RT or 4°C for 1 h.

**Primary antibody:** 1:1000 dilution overnight at 4°C.

**Secondary antibody:** 1:10000 dilution using Goat Anti-Rabbit IgG H&L (HRP) (Cat# PHY6000).

**Detection:** using chemiluminescence substrate and image were captured with CCD camera.