

Anti-CrPetB/CrCyt *b₆* antibody

Catalog: PHY5698A

Product Information

Description:	Rabbit polyclonal antibody
Background:	PetB gene encodes cytochrome <i>b₆</i> , an essential subunit of the cytochrome <i>b₆f</i> complex. This complex is located in the chloroplast thylakoid membrane and mediates electron transfer between Photosystem II and Photosystem I, which is crucial for generating the proton gradient required for ATP synthesis.
Synonyms:	PetB, petB
Immunogen:	KLH-conjugated synthetic peptide (13 aa from Central section) derived from <i>Chlamydomonas reinhardtii</i> PetB (CreCp.g802270).
Form:	Lyophilized
Quantity:	150 µg
Purification:	Immunogen affinity purified
Reconstitution:	Reconstitution with 150 µl of sterile 1XPBS (PH=7.4) containing 30% glycerol. "Note: please spin tube briefly prior to opening it to avoid any losses that might occur from lyophilized material adhering to the cap or sides of the tube".
Stability & Storage:	Use a manual defrost freezer and avoid repeated freeze-thaw cycles. 12 months from date of receipt, -20 to -70°C as supplied. 6 months, -20 to -70°C under sterile conditions after reconstitution. 1 month, 2 to 8°C under sterile conditions after reconstitution.
Shipping:	The product is shipped at 4°C. Upon receipt, store it immediately at the temperature recommended above.

Application Information

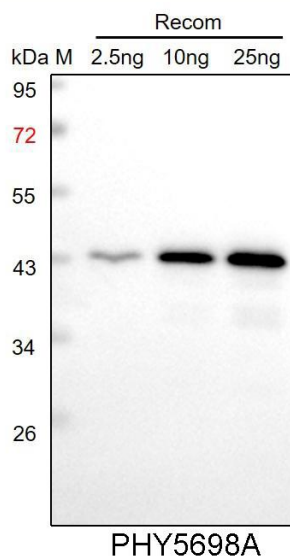
Recommended Dilution:	Western Blot (1:1000-1:2000) Note: Optimal dilutions/concentrations should be determined by the end user.
Expected / apparent MW:	24 kDa
Predicted Reactivity:	Among species analyzed, the sequence of the synthetic peptide used for immunization is 100% homologues with the sequence in <i>Synechococcus elongatus</i> PCC 7942, and 92% homologues with the

Research Use Only

sequence in *Brassica napus*, *Solanum tuberosum*, *Medicago truncatula*, *Zea mays*, *Hordeum vulgare*, *Oryza sativa*, *Triticum aestivum*, *Panicum virgatum*, *Sorghum bicolor*, *Gossypium raimondii*, *Setaria viridis*, *Cucumis sativus*, *Brassica rapa*, *Medicago truncatula*, *Arabidopsis thaliana*, *Populus trichocarpa*, *Nicotiana tabacum*, *Physcomitrium patens*, *Solanum lycopersicum*, *Spinacia oleracea*, *Glycine max*, *Vitis vinifera*.

For more species homologues information, please contact tech support at tech@phytoab.com.

Application Example



Recom: 2.5 ng, 10 ng and 25 ng recombinant protein containing the peptide for immunization and having a molecular mass of 43 kDa.

Electrophoresis: 12% SDS-PAGE

Transfer: blotting to NC (nitrocellulose) membrane for 1 h.

Blocking: 5% skim milk at RT or 4°C for 1 h.

Primary antibody: 1:1000 dilution overnight at 4°C.

Secondary antibody: 1:10000 dilution using Goat Anti-Rabbit IgG H&L (HRP) (Cat# PHY6000).

Detection: using chemiluminescence substrate and image were captured with CCD camera.