

Anti-GOX1/2 antibody

Catalog: PHY2924A

Product Information

Description:	Rabbit polyclonal antibody
Background:	GOX1 is a glycolate oxidase. It plays a key role in photorespiration by oxidizing glycolate to glyoxylate and producing H ₂ O ₂ , and modulates reactive oxygen species-mediated signal transduction during nonhost resistance. GOX2 is a closely related glycolate oxidase. It similarly catalyzes the conversion of glycolate to glyoxylate in photorespiration but may have distinct functional roles, such as in defense signaling pathways.
Synonyms:	GOX1/2, GLYCOLATE OXIDASE 1/2
Immunogen:	KLH-conjugated synthetic peptide (14 aa from Central section) derived from <i>Arabidopsis thaliana</i> GOX1 (AT3G14420) and GOX2 (AT3G14415).
Form:	Lyophilized
Quantity:	150 µg
Purification:	Immunogen affinity purified
Reconstitution:	Reconstitution with 150 µl of sterile 1XPBS (PH=7.4) containing 30% glycerol. "Note: please spin tube briefly prior to opening it to avoid any losses that might occur from lyophilized material adhering to the cap or sides of the tube".
Stability & Storage:	Use a manual defrost freezer and avoid repeated freeze-thaw cycles. 12 months from date of receipt, -20 to -70°C as supplied. 6 months, -20 to -70°C under sterile conditions after reconstitution. 1 month, 2 to 8°C under sterile conditions after reconstitution.
Shipping:	The product is shipped at 4°C. Upon receipt, store it immediately at the temperature recommended above.

Application Information

Recommended Dilution:	Western Blot (1:1000-1:2000) Note: Optimal dilutions/concentrations should be determined by the end user.
Expected / apparent MW:	40 kDa
Predicted Reactivity:	Among species analyzed, the sequence of the synthetic peptide used

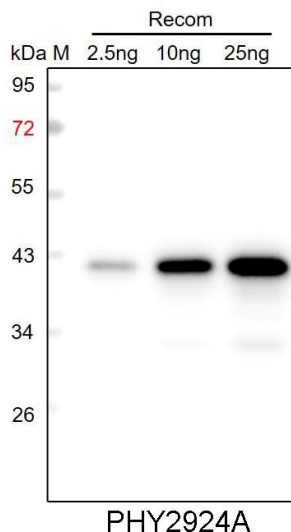
Research Use Only

for immunization is 100% homologues with the sequence in *Brassica napus*, *Hordeum vulgare*, *Brassica rapa*, *Panicum virgatum*, *Setaria viridis*, *Zea mays*, *Nicotiana tabacum*, *Glycine max*, *Vitis vinifera*, *Sorghum bicolor*, *Populus trichocarpa*, *Solanum tuberosum*, *Solanum lycopersicum*, *Gossypium raimondii*, *Triticum aestivum*, *Cucumis sativus*, and 80-99% homologues with the sequence in *Medicago truncatula*, *Spinacia oleracea*, *Physcomitrium patens*.

The sequence of the synthetic peptide used for immunization is 93% (13 / 14) homologues with the sequence in GOX3 (AT4G18360).

For more species homologues information, please contact tech support at tech@phytoab.com.

Application Example



Recom: 2.5 ng, 10 ng and 25 ng recombinant protein containing the peptide for immunization and having a molecular mass of 42 kDa.

Electrophoresis: 12% SDS-PAGE

Transfer: blotting to NC (nitrocellulose) membrane for 1 h.

Blocking: 5% skim milk at RT or 4°C for 1 h.

Primary antibody: 1:1000 dilution overnight at 4°C.

Secondary antibody: 1:10000 dilution using Goat Anti-Rabbit IgG H&L (HRP) (Cat# PHY6000).

Detection: using chemiluminescence substrate and image were captured with CCD camera.