

Anti-MC1/MCP1b antibody

Catalog: PHY8037S

Product Information

Description:	Rabbit polyclonal antibody
Background:	MC1 is a type I metacaspase and is a positive regulator of programmed cell death (PCD), requiring conserved catalytic residues. It localizes to stress granules and aids in clearing protein aggregates, linking PCD with protein quality control and aging.
Synonyms:	MC1, AtMCP1b, MCP1b, ATMC1, LOL3, ATMCPB1
Immunogen:	KLH-conjugated synthetic peptide (14 aa from central section) derived from <i>Arabidopsis thaliana</i> MC1/MCP1b (AT1G02170).
Form:	Lyophilized
Quantity:	150 µg
Purification:	Serum Peptide affinity form antibody available upon request at info@phytoab.com .
Reconstitution:	Reconstitution with 150 µl of sterile water. "Note: please spin tube briefly prior to opening it to avoid any losses that might occur from lyophilized material adhering to the cap or sides of the tube".
Stability & Storage:	Use a manual defrost freezer and avoid repeated freeze-thaw cycles. 12 months from date of receipt, -20 to -70°C as supplied. 6 months, -20 to -70°C under sterile conditions after reconstitution. 1 month, 2 to 8°C under sterile conditions after reconstitution.
Shipping:	The product is shipped at 4°C. Upon receipt, store it immediately at the temperature recommended above.

Application Information

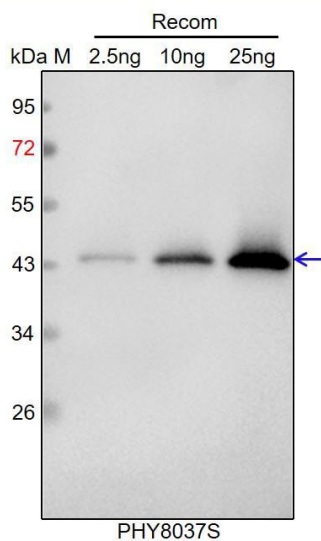
Recommended Dilution:	Western Blot (1:1000-1:2000) Note: Optimal dilutions/concentrations should be determined by the end user.
Expected / apparent MW:	40 kDa
Predicted Reactivity:	Among species analyzed, the sequence of the synthetic peptide used for immunization is 100% homologues with the sequence in <i>Brassica</i>

Research Use Only

rapa, *Brassica napus*, and 80-99% homologues with the sequence in *Gossypium raimondii*, *Nicotiana tabacum*, *Populus trichocarpa*, *Oryza sativa*, *Zea mays*, *Solanum tuberosum*, *Triticum aestivum*, *Solanum lycopersicum*, *Cucumis sativus*, *Vitis vinifera*, *Hordeum vulgare*, *Sorghum bicolor*, *Panicum virgatum*, *Setaria viridis*, *Spinacia oleracea*.

For more species homologues information, please contact tech support at tech@phytoab.com.

Application Example



Recom: 2.5 ng, 10 ng and 25 ng recombinant protein containing the peptide for immunization and having a molecular mass of 43 kDa.

Electrophoresis: 12% SDS-PAGE

Transfer: blotting to NC (nitrocellulose) membrane for 1 h.

Blocking: 5% skim milk at RT or 4°C for 1 h.

Primary antibody: 1:1000 dilution overnight at 4°C.

Secondary antibody: 1:10000 dilution using Goat Anti-Rabbit IgG H&L (HRP) (Cat# PHY6000).

Detection: using chemiluminescence substrate and image were captured with CCD camera.