

# Anti-ADP-ribosylation factor 1 antibody

Catalog: PHY0006S

## Product Information

<b>Description:</b>	Rabbit polyclonal antibody
<b>Background:</b>	Arf1 is essential for vesicle coating and uncoating and functions in GTP-binding. It plays a role in cell division, cell expansion and cellulose production using antisense construct.
<b>Synonyms:</b>	Arf1, AtARF1, ARF1A1C, BEX1, BFA-VISUALIZED EXOCYTIC TRAFFICKING DEFECTIVE 1
<b>Immunogen:</b>	Recombinant protein (1-181 aa) derived from <i>Arabidopsis thaliana</i> Arf1 (AT2G47170).
<b>Form:</b>	Lyophilized
<b>Quantity:</b>	150 µg
<b>Purification:</b>	Protein A Purified
<b>Reconstitution:</b>	Reconstitution with 150 µl of sterile 1XPBS (PH=7.4) containing 30% glycerol. "Note: please spin tube briefly prior to opening it to avoid any losses that might occur from lyophilized material adhering to the cap or sides of the tube".
<b>Stability &amp; Storage:</b>	Use a manual defrost freezer and avoid repeated freeze-thaw cycles. 12 months from date of receipt, -20 to -70°C as supplied. 6 months, -20 to -70°C under sterile conditions after reconstitution. 1 month, 2 to 8°C under sterile conditions after reconstitution.
<b>Shipping:</b>	The product is shipped at 4°C. Upon receipt, store it immediately at the temperature recommended above.

## Application Information

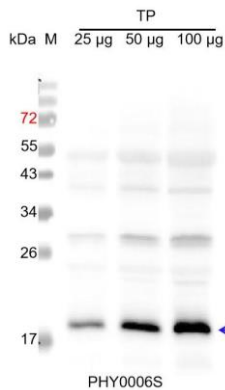
<b>Recommended Dilution:</b>	Western Blot (1:1000-1:2000) Note: Optimal dilutions/concentrations should be determined by the end user.
<b>Expected / apparent MW:</b>	21 kDa
<b>Confirmed Reactivity:</b>	<i>Arabidopsis thaliana</i>
<b>Predicted Reactivity:</b>	The sequence of the recombinant protein used for immunization is 98%-99% homologues with the sequence in ARFA1A (AT1G23490),

Research Use Only

ARFA1B (AT5G14670), ARFA1D (AT1G70490), ARFA1E (AT3G62290), ARFA1F (AT1G10630).

For more species homologues information, please contact tech support at [tech@phytoab.com](mailto:tech@phytoab.com).

## Application Example



TP: 25 µg, 50 µg and 100 µg total protein from *Arabidopsis thaliana*, respectively.

**Electrophoresis:** 15% SDS-PAGE

**Transfer:** blotting to NC (nitrocellulose) membrane for 1 h.

**Blocking:** 5% skim milk at RT or 4°C for 1 h.

**Primary antibody:** 1:2000 dilution overnight at 4°C.

**Secondary antibody:** 1:20000 dilution using Goat Anti-Rabbit IgG H&L (HRP) (Cat# PHY6000).

**Detection:** using chemiluminescence substrate and image were captured with CCD camera.