

# Anti-SYP121 antibody

Catalog: PHY8096S

## Product Information

<b>Description:</b>	Rabbit polyclonal antibody
<b>Background:</b>	SYP121 is a plasma membrane-localized syntaxin and member of the SNARE protein family. It functions in vesicle trafficking, positions potassium channels at the plasma membrane, contributes to defense against fungal pathogens, and regulates stomatal movement and plant growth.
<b>Synonyms:</b>	SYP121, AT-SYR1, ATSYP121, ATSYR1, PEN1, PENETRATION1, SYNTAXIN OF PLANTS 121, SYNTAXIN RELATED PROTEIN 1, SYR1
<b>Immunogen:</b>	KLH-conjugated synthetic peptide (16 aa from C-terminal section) derived from <i>Arabidopsis thaliana</i> SYP121 (AT3G11820).
<b>Form:</b>	Lyophilized
<b>Quantity:</b>	150 µg
<b>Purification:</b>	Serum Peptide affinity form antibody available upon request at <a href="mailto:info@phytoab.com">info@phytoab.com</a> .
<b>Reconstitution:</b>	Reconstitution with 150 µl of sterile water. "Note: please spin tube briefly prior to opening it to avoid any losses that might occur from lyophilized material adhering to the cap or sides of the tube".
<b>Stability &amp; Storage:</b>	Use a manual defrost freezer and avoid repeated freeze-thaw cycles. 12 months from date of receipt, -20 to -70°C as supplied. 6 months, -20 to -70°C under sterile conditions after reconstitution. 1 month, 2 to 8°C under sterile conditions after reconstitution.
<b>Shipping:</b>	The product is shipped at 4°C. Upon receipt, store it immediately at the temperature recommended above.

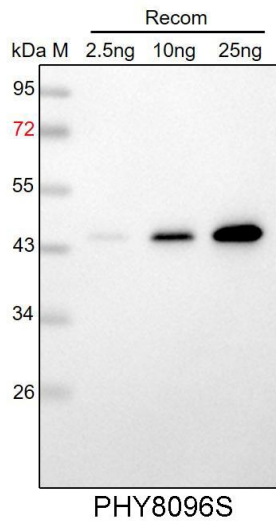
## Application Information

<b>Recommended Dilution:</b>	Western Blot (1:1000-1:2000) Note: Optimal dilutions/concentrations should be determined by the end user.
<b>Expected / apparent MW:</b>	38 kDa
<b>Predicted Reactivity:</b>	For more species homologues information, please contact tech

Research Use Only

support at [tech@phytoab.com](mailto:tech@phytoab.com).

## Application Example



Recom: 2.5 ng, 10 ng and 25 ng recombinant protein containing the peptide for immunization and having a molecular mass of 44 kDa.

**Electrophoresis:** 12% SDS-PAGE

**Transfer:** blotting to NC (nitrocellulose) membrane for 1 h.

**Blocking:** 5% skim milk at RT or 4°C for 1 h.

**Primary antibody:** 1:1000 dilution overnight at 4°C.

**Secondary antibody:** 1:10000 dilution using Goat Anti-Rabbit IgG H&L (HRP) (Cat# PHY6000).

**Detection:** using chemiluminescence substrate and image were captured with CCD camera.