

Anti-PIP2;2/3/4/6 antibody

Catalog: PHY0673S

Product Information

Description:	Rabbit polyclonal antibody
Background:	PIP2;2/3/4/6 are members of the plasma membrane intrinsic protein subfamily PIP2. They localize to the plasma membrane and exhibit water transport activity in xenopus oocyte.
Synonyms:	PIP2;2/3/4/6
Immunogen:	KLH-conjugated synthetic peptide of PIP2;2/3/4/6 (14 aa from central section) derived from <i>Arabidopsis thaliana</i> AT2G37170, AT2G37180, AT5G60660, AT2G39010.
Form:	Lyophilized
Quantity:	150 µg
Purification:	Serum Peptide affinity form antibody available upon request at info@phytoab.com .
Reconstitution:	Reconstitution with 150 µl of sterile water. "Note: please spin tube briefly prior to opening it to avoid any losses that might occur from lyophilized material adhering to the cap or sides of the tube".
Stability & Storage:	Use a manual defrost freezer and avoid repeated freeze-thaw cycles. 12 months from date of receipt, -20 to -70°C as supplied. 6 months, -20 to -70°C under sterile conditions after reconstitution. 1 month, 2 to 8°C under sterile conditions after reconstitution.
Shipping:	The product is shipped at 4°C. Upon receipt, store it immediately at the temperature recommended above.

Application Information

Recommended Dilution:	Western Blot (1:1000-1:2000) Note: Optimal dilutions/concentrations should be determined by the end user.
Expected / apparent MW:	30 kDa
Predicted Reactivity:	Among species analyzed, the sequence of the synthetic peptide used for immunization is 100% homologues with the sequence in <i>Brassica</i>

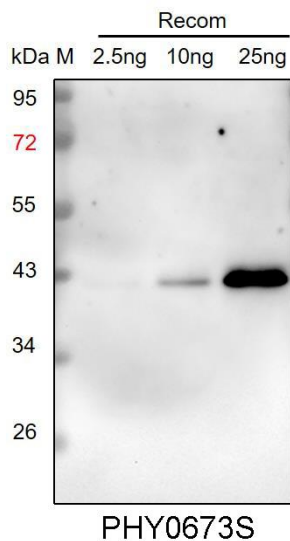
Research Use Only

rapa, *Brassica napus*, *Panicum virgatum*, *Sorghum bicolor*, *Oryza sativa*, *Glycine max*, *Vitis vinifera*, *Zea mays*, *Cucumis sativus*, *Setaria viridis*, *Medicago truncatula*, *Nicotiana tabacum*, *Hordeum vulgare*, *Solanum tuberosum*, *Triticum aestivum*, *Gossypium raimondii*, *Solanum lycopersicum*, *Physcomitrium patens*, and 92% homologues with the sequence in *Spinacia oleracea*, *leymus chinensis*.

The sequence of the synthetic peptide used for immunization is 93% homologues with the sequence in PIP2;1 (AT3G53420), PIP2;5 (AT3G54820), PIP2;7 (AT4G35100), PIP2;8 (AT2G16850), PIP1;2 (AT2G45960), PIP1;1 (AT3G61430).

For more species homologues information, please contact tech support at tech@phytoab.com.

Application Example



Recom: 2.5 ng, 10 ng and 25 ng recombinant protein containing the peptide for immunization and having a molecular mass of 42 kDa.

Electrophoresis: 12% SDS-PAGE

Transfer: blotting to NC (nitrocellulose) membrane for 1 h.

Blocking: 5% skim milk at RT or 4°C for 1 h.

Primary antibody: 1:1000 dilution overnight at 4°C.

Secondary antibody: 1:10000 dilution using Goat Anti-Rabbit IgG H&L (HRP) (Cat# PHY6000).

Detection: using chemiluminescence substrate and image were captured with CCD camera.