

Anti-PIMT2 antibody

Catalog: PHY7429S

Product Information

Description:	Rabbit polyclonal antibody
Background:	PIMT2 is a protein-repairing enzyme that specializes in the nucleus to repair damaged proteins. It converts abnormal isoaspartyl residues back to normal aspartyl, thereby enhancing seed vigor, longevity, and stress tolerance.
Synonyms:	PIMT2, ARABIDOPSIS THALIANA PROTEIN-L-ISOASPARTATE METHYLTRANSFERASE 2, ATPIMT2, PROTEIN-L-ISOASPARTATE METHYLTRANSFERASE 2
Immunogen:	KLH-conjugated synthetic peptide (16 aa from N-terminal section) derived from <i>Arabidopsis thaliana</i> PIMT2 (AT5G50240).
Form:	Lyophilized
Quantity:	150 µg
Purification:	Serum Peptide affinity form antibody available upon request at info@phytoab.com .
Reconstitution:	Reconstitution with 150 µl of sterile water. "Note: please spin tube briefly prior to opening it to avoid any losses that might occur from lyophilized material adhering to the cap or sides of the tube".
Stability & Storage:	Use a manual defrost freezer and avoid repeated freeze-thaw cycles. 12 months from date of receipt, -20 to -70°C as supplied. 6 months, -20 to -70°C under sterile conditions after reconstitution. 1 month, 2 to 8°C under sterile conditions after reconstitution.
Shipping:	The product is shipped at 4°C. Upon receipt, store it immediately at the temperature recommended above.

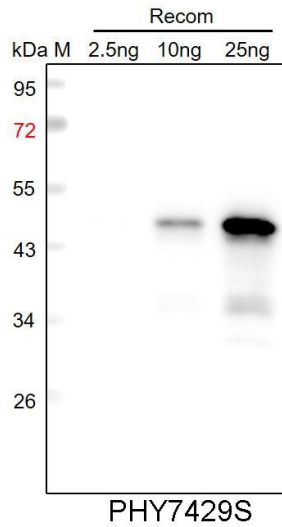
Application Information

Recommended Dilution:	Western Blot (1:1000-1:2000) Note: Optimal dilutions/concentrations should be determined by the end user.
Expected / apparent MW:	34 kDa
Predicted Reactivity:	For more species homologues information, please contact tech

Research Use Only

support at tech@phytoab.com.

Application Example



Recom: 2.5 ng, 10 ng and 25 ng recombinant protein containing the peptide for immunization and having a molecular mass of 48 kDa.

Electrophoresis: 12% SDS-PAGE

Transfer: blotting to NC (nitrocellulose) membrane for 1 h.

Blocking: 5% skim milk at RT or 4°C for 1 h.

Primary antibody: 1:1000 dilution overnight at 4°C.

Secondary antibody: 1:10000 dilution using Goat Anti-Rabbit IgG H&L (HRP) (Cat# PHY6000).

Detection: using chemiluminescence substrate and image were captured with CCD camera.