

Anti-ATP1, Mitochondrial antibody

Catalog: PHY0586A

Product Information

Description:	Rabbit polyclonal antibody
Background:	Mitochondrial F ₀ F ₁ -ATP synthase is also called Complex V and it synthesizes ATP from ADP and Pi using the proton motive force created by respiratory electron transport. ATP1 (ATMG01190/AT2G07698) is a subunit of mitochondrial F ₀ F ₁ -ATP synthase in <i>Arabidopsis</i> .
Synonyms:	ATP SYNTHASE SUBUNIT 1, ATP1
Immunogen:	KLH-conjugated synthetic peptide (17 aa from N-terminal section) derived from <i>Arabidopsis thaliana</i> ATP1 (ATMG01190, AT2G07698).
Form:	Lyophilized
Quantity:	150 µg
Purification:	Immunogen affinity purified
Reconstitution:	Reconstitution with 150 µl of sterile 1XPBS (PH=7.4) containing 30% glycerol. "Note: please spin tube briefly prior to opening it to avoid any losses that might occur from lyophilized material adhering to the cap or sides of the tube".
Stability & Storage:	Use a manual defrost freezer and avoid repeated freeze-thaw cycles. 12 months from date of receipt, -20 to -70°C as supplied. 6 months, -20 to -70°C under sterile conditions after reconstitution. 1 month, 2 to 8°C under sterile conditions after reconstitution.
Shipping:	The product is shipped at 4°C. Upon receipt, store it immediately at the temperature recommended above.

Application Information

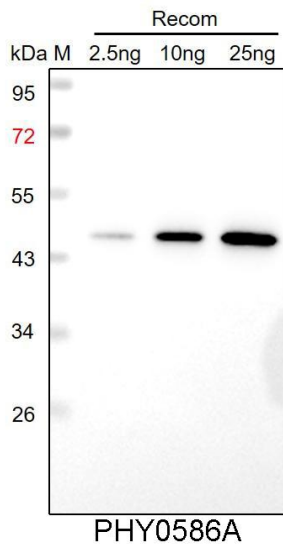
Recommended Dilution:	Western Blot (1:1000-1:2000) Note: Optimal dilutions/concentrations should be determined by the end user.
Expected / apparent MW:	55 kDa
Predicted Reactivity:	Among species analyzed, the sequence of the synthetic peptide used for immunization is 100% homologous with the sequence in <i>Triticum aestivum</i> , <i>Zea mays</i> , and 80-99% homologous with the sequence in

Research Use Only

Brassica napus, Brassica rapa, Hordeum vulgare, Sorghum bicolor, Panicum virgatum, Oryza sativa, Setaria viridis, Solanum tuberosum, Glycine max, Medicago truncatula, Vitis vinifera, Gossypium raimondii, Solanum lycopersicum, Nicotiana tabacum, Cucumis sativus, Populus trichocarpa, Spinacia oleracea, Physcomitrium patens.

For more species homologues information, please contact tech support at tech@phytoab.com.

Application Example



Recom: 2.5 ng, 10 ng and 25 ng recombinant protein containing the peptide for immunization and having a molecular mass of 48 kDa.

Electrophoresis: 12% SDS-PAGE

Transfer: blotting to NC (nitrocellulose) membrane for 1 h.

Blocking: 5% skim milk at RT or 4°C for 1 h.

Primary antibody: 1:1000 dilution overnight at 4°C.

Secondary antibody: 1:10000 dilution using Goat Anti-Rabbit IgG H&L (HRP) (Cat# PHY6000).

Detection: using chemiluminescence substrate and image were captured with CCD camera.