

Anti-PK1/AT5G63680 antibody

Catalog: PHY8068S

Product Information

Description:	Rabbit polyclonal antibody
Background:	PK1 is a pyruvate kinase family protein. It functions in glycolysis, is located in the cytoplasm and plastids, and exhibits pyruvate kinase activity.
Synonyms:	PK1 (PYRUVATE KINASE 1)
Immunogen:	KLH-conjugated synthetic peptide (15 aa from C-terminal section) derived from <i>Arabidopsis thaliana</i> PK1 (AT5G63680).
Form:	Lyophilized
Quantity:	150 µg
Purification:	Serum Peptide affinity form antibody available upon request at info@phytoab.com .
Reconstitution:	Reconstitution with 150 µl of sterile water. "Note: please spin tube briefly prior to opening it to avoid any losses that might occur from lyophilized material adhering to the cap or sides of the tube".
Stability & Storage:	Use a manual defrost freezer and avoid repeated freeze-thaw cycles. 12 months from date of receipt, -20 to -70°C as supplied. 6 months, -20 to -70°C under sterile conditions after reconstitution. 1 month, 2 to 8°C under sterile conditions after reconstitution.
Shipping:	The product is shipped at 4°C. Upon receipt, store it immediately at the temperature recommended above.

Application Information

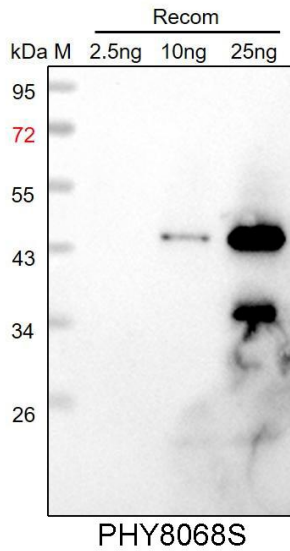
Recommended Dilution:	Western Blot (1:1000-1:2000) Note: Optimal dilutions/concentrations should be determined by the end user.
Expected / apparent MW:	55 kDa
Predicted Reactivity:	Among species analyzed, the sequence of the synthetic peptide used for immunization is 80-99% homologues with the sequence in <i>Solanum tuberosum</i> , <i>Brassica napus</i> , <i>Brassica rapa</i> , <i>Solanum lycopersicum</i> , <i>Glycine max</i> , <i>Nicotiana tabacum</i> , <i>Gossypium raimondii</i> ,

Research Use Only

Zea mays, Physcomitrium patens, Hordeum vulgare, Triticum aestivum, Panicum virgatum, Setaria viridis, Sorghum bicolor, Spinacia oleracea, Cucumis sativus.

For more species homologues information, please contact tech support at tech@phytoab.com.

Application Example



Recom: 2.5 ng, 10 ng and 25 ng recombinant protein containing the peptide for immunization and having a molecular mass of 45 kDa.

Electrophoresis: 12% SDS-PAGE

Transfer: blotting to NC (nitrocellulose) membrane for 1 h.

Blocking: 5% skim milk at RT or 4°C for 1 h.

Primary antibody: 1:1000 dilution overnight at 4°C.

Secondary antibody: 1:10000 dilution using Goat Anti-Rabbit IgG H&L (HRP) (Cat# PHY6000).

Detection: using chemiluminescence substrate and image were captured with CCD camera.