

Anti-POPTR_018G067800 antibody

Catalog: PHY6361A

Product Information

Description:	Rabbit polyclonal antibody
Background:	POPTR_018G067800 may be a nucleosome assembly family protein in <i>Populus trichocarpa</i> . It probably binds to chromatin and histones to perform nucleosome assembly, and is localized within the nucleus.
Synonyms:	POPTR_018G067800
Immunogen:	KLH-conjugated synthetic peptide (17 aa from central section) derived from <i>Populus trichocarpa</i> POPTR_018G067800.
Form:	Lyophilized
Quantity:	150 µg
Purification:	Immunogen affinity purified
Reconstitution:	Reconstitution with 150 µl of sterile 1XPBS (PH=7.4) containing 30% glycerol. "Note: please spin tube briefly prior to opening it to avoid any losses that might occur from lyophilized material adhering to the cap or sides of the tube".
Stability & Storage:	Use a manual defrost freezer and avoid repeated freeze-thaw cycles. 12 months from date of receipt, -20 to -70°C as supplied. 6 months, -20 to -70°C under sterile conditions after reconstitution. 1 month, 2 to 8°C under sterile conditions after reconstitution.
Shipping:	The product is shipped at 4°C. Upon receipt, store it immediately at the temperature recommended above.

Application Information

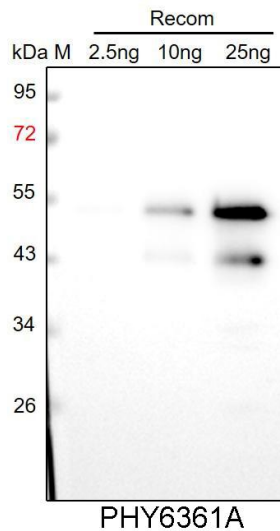
Recommended Dilution:	Western Blot (1:1000-1:2000) Note: Optimal dilutions/concentrations should be determined by the end user.
Expected / apparent MW:	44 kDa
Predicted Reactivity:	Among species analyzed, the sequence of the synthetic peptide used for immunization is 100% homologues with the sequence in <i>Vitis vinifera</i> , <i>Gossypium raimondii</i> , <i>Zea mays</i> , and 80-99% homologues with the sequence in <i>Sorghum bicolor</i> , <i>Cucumis sativus</i> , <i>Solanum</i>

Research Use Only

tuberosum, Glycine max, Solanum tuberosum, Oryza sativa, Solanum lycopersicum, Hordeum vulgare, Nicotiana tabacum, Brassica rapa, Brassica napus, Panicum virgatum, Medicago truncatula, Triticum aestivum, Sorghum bicolor, Setaria viridis, Arabidopsis thaliana.

For more species homologues information, please contact tech support at tech@phytoab.com.

Application Example



Recom: 2.5 ng, 10 ng and 25 ng recombinant protein containing the peptide for immunization and having a molecular mass of 52 kDa.

Electrophoresis: 12% SDS-PAGE

Transfer: blotting to NC (nitrocellulose) membrane for 1 h.

Blocking: 5% skim milk at RT or 4°C for 1 h.

Primary antibody: 1:1000 dilution overnight at 4°C.

Secondary antibody: 1:10000 dilution using Goat Anti-Rabbit IgG H&L (HRP) (Cat# PHY6000).

Detection: using chemiluminescence substrate and image were captured with CCD camera.