

Anti-NPQ1 antibody

Catalog: PHY1225A

Product Information

Description:	Rabbit polyclonal antibody
Background:	NPQ1 is violaxanthin de-epoxidase, a key enzyme in the xanthophyll cycle located in the chloroplast thylakoid lumen. It converts violaxanthin to zeaxanthin under high light, playing a central role in photoprotection and non-photochemical quenching (NPQ).
Synonyms:	NPQ1, ARABIDOPSIS VIOLAXANTHIN DE-EPOXIDASE 1, AVDE1, NON-PHOTOCHEMICAL QUENCHING 1
Immunogen:	KLH-conjugated synthetic peptide (15 aa from central section) derived from <i>Arabidopsis thaliana</i> NPQ1 (AT1G08550).
Form:	Lyophilized
Quantity:	150 µg
Purification:	Immunogen affinity purified
Reconstitution:	Reconstitution with 150 µl of sterile 1XPBS (PH=7.4) containing 30% glycerol. "Note: please spin tube briefly prior to opening it to avoid any losses that might occur from lyophilized material adhering to the cap or sides of the tube".
Stability & Storage:	Use a manual defrost freezer and avoid repeated freeze-thaw cycles. 12 months from date of receipt, -20 to -70°C as supplied. 6 months, -20 to -70°C under sterile conditions after reconstitution. 1 month, 2 to 8°C under sterile conditions after reconstitution.
Shipping:	The product is shipped at 4°C. Upon receipt, store it immediately at the temperature recommended above.

Application Information

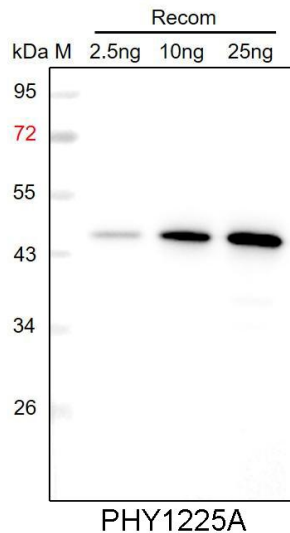
Recommended Dilution:	Western Blot (1:1000-1:2000) Note: Optimal dilutions/concentrations should be determined by the end user.
Expected / apparent MW:	52 kDa
Predicted Reactivity:	Among species analyzed, the sequence of the synthetic peptide used for immunization is 80-99% homologues with the sequence in

Research Use Only

Solanum tuberosum, Solanum lycopersicum, Nicotiana tabacum, Gossypium raimondii, Panicum virgatum, Setaria viridis, Zea mays, Glycine max, Populus trichocarpa, Vitis vinifera, Medicago truncatula, Brassica napus, Brassica rapa.

For more species homologues information, please contact tech support at tech@phytoab.com.

Application Example



Recom: 2.5 ng, 10 ng and 25 ng recombinant protein containing the peptide for immunization and having a molecular mass of 46 kDa.

Electrophoresis: 12% SDS-PAGE

Transfer: blotting to NC (nitrocellulose) membrane for 1 h.

Blocking: 5% skim milk at RT or 4°C for 1 h.

Primary antibody: 1:1000 dilution overnight at 4°C.

Secondary antibody: 1:10000 dilution using Goat Anti-Rabbit IgG H&L (HRP) (Cat# PHY6000).

Detection: using chemiluminescence substrate and image were captured with CCD camera.