

Anti-OsPAL1 antibody

Catalog: PHY4499A

Product Information

Description:	Rabbit polyclonal antibody
Background:	OsPAL1 is a phenylalanine ammonia-lyase in rice. This enzyme catalyzes the first step in the phenylpropanoid pathway and is crucial for plant immunity. Its activity is finely regulated by ubiquitination and methylation to control disease resistance.
Synonyms:	PAL1, OsPAL, Pal1, Pal1, PAL, Pal_1, PalI, PAL2, OsPAL01, PAL01, OSPAL, CP-1, GP-1, OsPAL1, PAL3, OsPAL3
Immunogen:	KLH-conjugated synthetic peptide (17 aa from central section) derived from <i>Oryza sativa</i> OsPAL1 (Os02g0626100).
Form:	Lyophilized
Quantity:	150 µg
Purification:	Immunogen affinity purified
Reconstitution:	Reconstitution with 150 µl of sterile 1XPBS (PH=7.4) containing 30% glycerol. "Note: please spin tube briefly prior to opening it to avoid any losses that might occur from lyophilized material adhering to the cap or sides of the tube".
Stability & Storage:	Use a manual defrost freezer and avoid repeated freeze-thaw cycles. 12 months from date of receipt, -20 to -70°C as supplied. 6 months, -20 to -70°C under sterile conditions after reconstitution. 1 month, 2 to 8°C under sterile conditions after reconstitution.
Shipping:	The product is shipped at 4°C. Upon receipt, store it immediately at the temperature recommended above.

Application Information

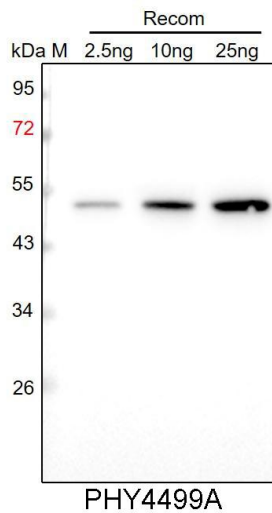
Recommended Dilution:	Western Blot (1:1000-1:2000) Note: Optimal dilutions/concentrations should be determined by the end user.
Expected / apparent MW:	78 kDa
Predicted Reactivity:	Among species analyzed, the sequence of the synthetic peptide used for immunization is 80-99% homologues with the sequence in

Research Use Only

Sorghum bicolor, Zea mays, Panicum virgatum, Setaria viridis, Hordeum vulgare, Solanum tuberosum, Triticum aestivum, Brassica rapa, Brassica napus, Arabidopsis thaliana, Nicotiana tabacum, Solanum lycopersicum, Medicago truncatula, Vitis vinifera, Gossypium raimondii, Cucumis sativus.

For more species homologues information, please contact tech support at tech@phytoab.com.

Application Example



Recom: 2.5 ng, 10 ng and 25 ng recombinant protein containing the peptide for immunization and having a molecular mass of 52 kDa.

Electrophoresis: 12% SDS-PAGE

Transfer: blotting to NC (nitrocellulose) membrane for 1 h.

Blocking: 5% skim milk at RT or 4°C for 1 h.

Primary antibody: 1:1000 dilution overnight at 4°C.

Secondary antibody: 1:10000 dilution using Goat Anti-Rabbit IgG H&L (HRP) (Cat# PHY6000).

Detection: using chemiluminescence substrate and image were captured with CCD camera.