

# Anti-OsABIL1 antibody

Catalog: PHY4640A

## Product Information

<b>Description:</b>	Rabbit polyclonal antibody
<b>Background:</b>	OsABIL1 is a negative regulatory gene within the abscisic acid (ABA) signal transduction pathway in rice. Its expression is increased by the protein OsABT to alleviate ABA's inhibitory effects on root growth and seed germination.
<b>Synonyms:</b>	PP2C6, OsPP2C06/OsABI2, OsPP2C06, OsPP2C6, OsABI2, OsPP10, ABI2, OsABIL1, ABIL1
<b>Immunogen:</b>	KLH-conjugated synthetic peptide (17 aa from central section) derived from <i>Oryza sativa</i> OsABIL1 (Os01g0583100).
<b>Form:</b>	Lyophilized
<b>Quantity:</b>	150 µg
<b>Purification:</b>	Immunogen affinity purified
<b>Reconstitution:</b>	Reconstitution with 150 µl of sterile 1XPBS (PH=7.4) containing 30% glycerol. "Note: please spin tube briefly prior to opening it to avoid any losses that might occur from lyophilized material adhering to the cap or sides of the tube".
<b>Stability &amp; Storage:</b>	Use a manual defrost freezer and avoid repeated freeze-thaw cycles. 12 months from date of receipt, -20 to -70°C as supplied. 6 months, -20 to -70°C under sterile conditions after reconstitution. 1 month, 2 to 8°C under sterile conditions after reconstitution.
<b>Shipping:</b>	The product is shipped at 4°C. Upon receipt, store it immediately at the temperature recommended above.

## Application Information

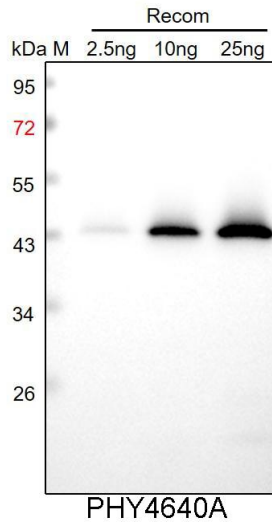
<b>Recommended Dilution:</b>	Western Blot (1:1000-1:2000) Note: Optimal dilutions/concentrations should be determined by the end user.
<b>Expected / apparent MW:</b>	52 kDa
<b>Predicted Reactivity:</b>	Among species analyzed, the sequence of the synthetic peptide used for immunization is 100% homologues with the sequence in <i>Panicum virgatum</i> , <i>Zea mays</i> , <i>Sorghum bicolor</i> , <i>Setaria viridis</i> , <i>Triticum</i>

Research Use Only

*aestivum*, *Hordeum vulgare*, and 80-99% homologues with the sequence in *Populus trichocarpa*, *Gossypium raimondii*, *Medicago truncatula*, *Vitis vinifera*, *Cucumis sativus*, *Solanum tuberosum*, *Solanum lycopersicum*, *Nicotiana tabacum*.

For more species homologues information, please contact tech support at [tech@phytoab.com](mailto:tech@phytoab.com).

### Application Example



Recom: 2.5 ng, 10 ng and 25 ng recombinant protein containing the peptide for immunization and having a molecular mass of 44 kDa.

**Electrophoresis:** 12% SDS-PAGE

**Transfer:** blotting to NC (nitrocellulose) membrane for 1 h.

**Blocking:** 5% skim milk at RT or 4°C for 1 h.

**Primary antibody:** 1:1000 dilution overnight at 4°C.

**Secondary antibody:** 1:10000 dilution using Goat Anti-Rabbit IgG H&L (HRP) (Cat# PHY6000).

**Detection:** using chemiluminescence substrate and image were captured with CCD camera.